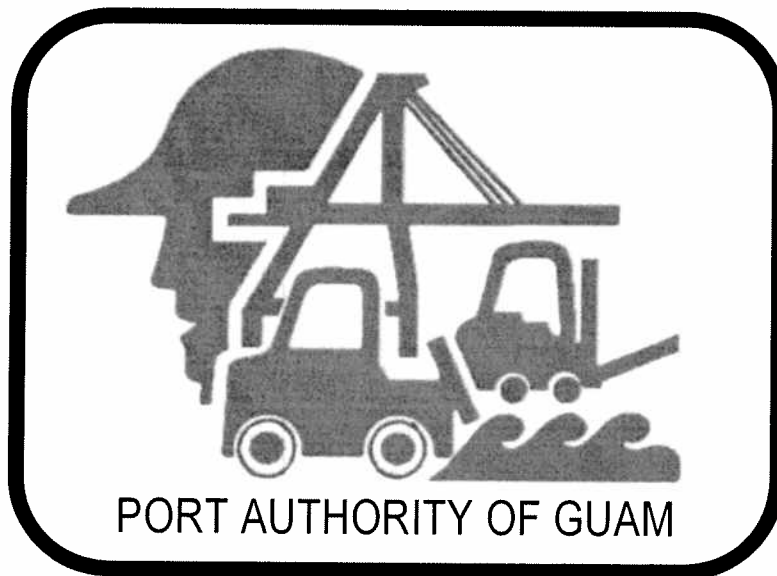


Jose D. Leon Guerrero
Commercial Port

FY 2012
Approved Budget



Approved by the Board of Directors
November 4, 2011 – Special Meeting of the Board of Directors

**PORT AUTHORITY OF GUAM
JOSE D. LEON GUERRERO COMMERCIAL PORT**

**FY-2012
APPROVED BUDGET**

TABLE OF CONTENTS

	<i>Page</i>
1) GRAND SUMMARY	1
2) REVENUES	2-3
3) NON-DIVISIONAL/GENERAL EXPENSE	4-5
4) SECTION/DIVISION SUMMARY	6
101 General Manager/Deputy General Manager	7
121 Harbor Master	8
122 Port Police	9
123 Safety	10
145 Planning Division	11
150 Marketing/Public Relations	12
300 Operations Manager	13
310-313 Stevedore	14
320 Terminal	15
330-333 Transportation	16
400-414,430 Equipment Maintenance	17
420-423 Facility Maintenance	18
600 Corporate Services	19
610 General Administration	20
620 Human Resources	21
630-632 Procurement & Supply	22
640 Engineering/CIP	23
650-655 Commercial	24
670 Information Technology	25
675,140,681,685 Finance Division	26
5) ORGANIZATIONAL CHART	27
6) STAFFING PATTERN	28-37
7) VACANT POSITION LISTING	38
8) CAPITAL IMPROVEMENT PROJECTS/UNFUNDED EQUIPMENTS	39-42
9) 5 YRS FORECAST AND CASH FLOW	43-47

**FY-2012
APPROVED BUDGET
GRAND SUMMARY**

Description	FY-2012 Approved Budget	FY-2011 Approved Budget	FY-2011 Antcpd EOY	FY-2010 YTD Actuals 09/30/10	FY-12 Appr vs FY-11 Appr	FY-12 Appr vs FY-11 Antcpd
Revenues						
Cargo Revenues	29,795,144	30,094,270	27,652,881	28,412,042	-299,125	2,142,263
Non Cargo Revenues	7,892,525	6,933,113	7,558,553	7,870,655	959,413	333,973
TOTAL REVENUES	37,687,670	37,027,382	35,211,434	36,282,697	660,288	2,476,236
Divisional - Salaries & Benefits						
Management & Employee Salaries	15,472,032	14,787,993	12,552,550	11,571,445	684,039	2,919,482
Holiday Bonus	0	0	0	0	0	0
Holiday Work	217,495	14,163	217,495	58,247	203,331	0
Sick Leave Used	0	0	468,359	387,568	0	-468,359
Annual Leave Taken	0	0	807,092	879,110	0	-807,092
Sick Leave Taken	0	0	0	179,165	0	0
Comp Time Taken	0	0	54,367	43,060	0	-54,367
Typhoon Salaries	0	0	0	4,707	0	0
Regular Salaries	15,689,527	14,802,156	14,099,862	13,123,302	887,371	1,589,664
Night Differential/Hazard Pay	568,830	510,007	546,952	500,680	58,822	21,878
Overtime	435,500	531,829	515,476	546,398	-96,329	-79,976
Retirement (27.46%)	4,247,470	3,956,707	3,944,166	3,411,727	290,763	303,304
Death & Disability	137,939	126,058	114,364	85,444	11,880	23,575
Hospital	848,768	980,667	883,947	527,652	-131,899	-35,179
Life	65,923	55,748	57,285	66,946	10,175	8,638
Dental	62,399	60,218	57,054	53,828	2,180	5,345
Medicare	199,453	188,301	192,377	175,814	11,152	7,076
SUB-TOTAL	22,255,809	21,211,692	20,411,483	18,491,791	1,044,117	1,844,326
Other Divisional Expense						
Office Supplies	53,743	47,282	37,525	37,142	6,461	16,218
Operational Supplies	1,016,430	1,024,288	535,652	1,055,263	-7,858	480,779
Gas, Diesel	477,000	350,000	478,803	417,366	127,000	-1,803
Equipment	251,767	238,772	31,301	79,850	12,995	220,466
Contractual	758,358	692,340	278,553	290,179	66,018	479,805
Miscellaneous	63,775	54,708	21,682	36,398	9,067	42,093
Training	75,000	98,368	15,302	44,028	-23,368	59,698
Travel	110,000	79,000	109,267	110,314	31,000	733
SUB-TOTAL	2,806,073	2,584,758	1,508,085	2,070,540	221,315	1,297,988
TOTAL DIVISIONAL EXPENSE	25,061,882	23,796,450	21,919,568	20,562,330	1,265,432	3,142,314
General Expense						
Contractual	4,408,371	5,478,379	5,584,006	5,528,511	-1,070,008	-1,175,636
Communication	119,100	116,300	110,103	100,217	2,800	8,997
Miscellaneous	180,000	200,000	137,761	145,207	-20,000	42,239
Others	2,412,000	2,382,000	2,830,445	3,343,795	30,000	-418,445
Depreciation Expense	2,905,802	2,905,802	3,037,295	2,817,811	0	-131,493
SUBTOTAL GENERAL EXPENSE	10,025,273	11,082,480	11,699,610	11,935,541	-1,057,208	-1,674,338
GRAND TOTAL EXPENSE	35,087,155	34,878,931	33,619,179	32,497,871	208,224	1,467,976
OPERATING INCOME/LOSS	2,600,515	2,148,451	1,592,255	3,784,826	452,063	1,008,260
OTHER INCOME/EXPENSE						
Non-Operating Expense	3,256,385	1,660,000	2,510,557	1,365,756	1,596,385	745,827
Miscellaneous Expense	0	0	0	0	0	0
Federal Reimbursements	9,194,308	6,067,622	4,910,333	432,689	3,126,686	4,283,975
Insurance Reimbursements	0	1,666,142	0	0	-1,666,142	0
Miscellaneous Income	137,449	461,228	463,935	384,356	-323,779	-326,485
TOTAL OTHER INCOME/EXPENSE	6,075,373	6,534,992	2,863,711	-548,711	-459,619	3,211,662
NET INCOME/LOSS	8,675,888	8,683,443	4,455,966	3,236,115	-7,556	4,219,922
Employee Count						
Classified	362	336	342	324	9	-6
Unclassified	2	1	3	3	-2	-2
Long Term Disability	4	4	7	6	-3	-3
Casual	0	0	0	1	-1	0
Vacant	16	16	10	35	11	6
New Vacant -Casual	8	18	6	0	-1	12
New Vacant	7	19	4	3	9	15
NO. OF EMPLOYEE	399	394	372	372	22	22

**FY-2012
APPROVED BUDGET
REVENUES**

DESCRIPTION	FY-2012 Approved Budget	FY-2011 Approved Budget	FY-2011 Antcpd EOY	FY-2010	FY-12 Appr	FY-12 Appr
				YTD Actuals 09/30/10	vs FY-11 Appr	vs FY-11 Antcpd
CARGO REVENUES						
CT Chassis	5,097,831	5,318,860	4,980,705	4,923,006	-221,029	117,126
CT Ground	9,835,183	11,251,274	10,577,386	10,789,982	-1,416,091	-742,203
CT Reefer	1,772,367		0		1,772,367	1,772,367
CT-Rehandled	4,696		0		4,696	4,696
CT Breakbulk	998,327	1,806,232	948,723	1,661,700	-807,905	49,604
CT Utilized	11,839	7,053	11,389	21,209	4,786	450
CT Tuna	0	0	0		0	0
CT Ro/Ro	191,236	157,147	183,969	153,147	34,089	7,267
CT Devan/Stuff	71,585	63,940	68,864	71,883	7,645	2,721
CT Heavylift	44,383	60,719	42,697	56,438	-16,336	1,686
CT Longlength	5,961	20,213	5,734	14,556	-14,252	227
CARGO THROUGHPUT REVENUES	18,033,408	18,685,438	16,819,468	17,691,921	-652,030	1,213,940
OTHER CARGO RELATED REVENUES						
Lift On/Lift Off	942	1,963	907	1,402	-1,021	35
Prestung	173,571	87,874	166,975	71,273	85,697	6,596
Transshipment Container	2,864,328	2,866,005	2,602,791	2,590,046	-1,677	261,538
Overstow Container	184,586	287,759	177,572	263,136	-103,173	7,014
Shifted Container	3,081	5,893	2,964	4,261	-2,812	117
Rigged Container	33,406	34,885	32,040	33,459	-1,479	1,366
Direct Labor Billed	1,614,416	1,729,151	1,262,696	1,601,029	-114,735	351,720
Equipment Rental	146,323	165,284	140,763	167,976	-18,961	5,560
Port Entry Fee&Dockage	382,152	347,384	357,235	323,064	34,768	24,917
Wharfage	4,164,614	4,546,385	3,970,784	4,130,569	-381,771	193,830
Fuel Surcharge*	604,216	620,439	600,336	616,553	-16,223	3,880
Manne Security Fee*	165,380	157,462	157,836	154,053	7,918	7,544
Facility Maintenance Fee	1,424,721	558,347	1,360,516	763,300	866,374	64,205
OTHER CARGO RELATED REVENUES	11,761,736	11,408,832	10,833,413	10,720,121	352,905	928,323
TOTAL CARGO REVENUES	29,795,144	30,094,270	27,652,881	28,412,042	-299,125	2,142,263
NON CARGO REVENUES						
FACILITIES REVENUES						
Facility Usage						
Facility-Usage-MOBIL	1,078,739	1,191,232	1,212,671	1,238,413	-112,493	-133,932
Facility-Usage-SHELL		1,523,871	0	67,215	-1,523,871	0
Facility-Usage-TRISTAR	2,015,063		1,751,151	1,912,366	2,015,063	263,912
Facility Usage	3,093,802	2,715,104	2,963,821	3,217,995	378,698	129,981
Space Rental						
Lease Income-GEDA	839,318	549,679	821,483	646,504	289,639	17,835
License Fee-Matson/Horizon	282,679	177,236	282,679	282,679	105,443	0
License Fee-Cemeton		142,449	0	26,709	-142,449	0
Common Area Maintenance	96,326	49,989	96,003	96,466	46,337	324
Security Surcharge Rental	60,067	20,911	60,179	71,696	39,156	-112
Marina Revenues						
Gregorio D. Perez	52,882	55,452	53,492	52,545	-2,570	-610
Agat Marina	200,249	211,953	199,217	190,296	-11,704	1,032
Marina Revenues	253,132	267,405	252,709	242,841	-14,274	422
Harbor of Refuge						
Demurrage	51,935	104,567	51,145	76,568	-52,631	790
	1,073,775	915,528	1,048,032	983,218	158,247	25,743
TOTAL FACILITY REVENUES	7,417,390	6,388,129	7,144,058	7,441,453	1,029,261	273,332
OTHER FEES & SERVICES						
Materials Used	286	1,339	255	398	-1,053	31
Passenger Service	68,678	47,096	41,571	30,401	21,582	27,107
Bunker Services	67,986	25,067	46,463	36,177	42,919	21,523
Special Services	129,976	87,591	109,617	111,970	42,385	20,359
Elect. Power-Unmetered	204,843	365,831	202,212	233,877	-160,988	2,631
TOTAL OTHER FEES & SERVICES	471,769	526,923	400,117	412,823	-55,154	71,651
ADMINISTRATIVE FEES & SERVICES						
PAG Documentation	3,367	0	5,267	5,800	3,367	-1,900
I.D. Badges	0	0	1,400		0	-1,400
Police Reports	0	0	27		0	-27
I.D. TWIC	0	0	5,664		0	-5,664
Tanff Subscription	0	0	0	150	0	0
Violation of Regulation Penalty	0	0	333	500	0	-333
Security Administration	0	3,367	0	4,504	-3,367	0
Procurement RFD BID Packet	0	0	1,687	5,530	0	-1,687
TOTAL ADMINISTRATIVE FEES & SERVICES	3,367	3,367	14,377	16,484	-3,367	-11,010

**FY-2012
APPROVED BUDGET
REVENUES**

DESCRIPTION	FY-2012 Approved Budget	FY-2011 Approved Budget	FY-2011 Antcpd EOY	FY-2010 YTD Actuals 09/30/10	FY-12 Appr vs FY-11 Appr	FY-12 Appr vs FY-11 Antcpd
OTHER INCOME/EXPENSE						
OTHER EXPENSE						
Miscellaneous Expense	0		0	-105	0	0
OTHER EXPENSE	0	0	0	-105	0	0
OTHER REIMBURSEMENTS						
GTA Multi Svc Fiber Reimbursement	0	14,694	0		-14,694	0
Fed Reim-HS 2009 PSGP ARRA	0		0		0	0
TOTAL OTHER REIMBURSEMENTS	0	14,694	0	0	-14,694	0
TOTAL OTHER INCOME/EXPENSE	0	14,694	0	-105	-14,694	0
TOTAL NON CARGO REVENUES	7,892,525	6,933,113	7,558,553	7,870,655	956,046	333,973
TOTAL CARGO/NON-CARGO REVENUES	37,687,670	37,027,382	35,211,434	36,282,697	656,921	2,476,236
REIMBURSEMENTS						
FEDERAL REIMBURSEMENT						
DOI-Gregorio D. Perez A & E Design	240,000	250,000	0		-10,000	240,000
DOI-Gregorio D. Perez Renovation & Site Improvements	1,951,666	2,100,000	346,049		-148,334	1,605,617
Federal Government Grant Award	0		5,780		0	-5,780
Fed Reim-EDA	3,765	50,000	572,408	1,261,775	-46,235	-568,643
Fed Reim-Federal Highway	1,458,333		0		1,458,333	1,458,333
Fed Reim-HS 2007 PSGP	0	6,000	0	26,744	-6,000	0
Fed Reim-HS 2008 PSGP	0	6,000	629,711	26,744	-6,000	-629,711
Fed Reim-HS 2009 PSGP	571,000	8,604			562,396	571,000
Fed Reim-HS 2010 PSGP	1,465,730				1,465,730	1,465,730
Fed Reim-OEA Mod. Fact F	152,356		327,508	1,073,365	152,356	-175,152
Fed Reim-OIA Mod. & Imp.	934,649	1,000,000	370,920	87,498	-65,351	563,729
Fed Reim-OEA Project Cont & Pr	1,109,709	1,000,000	420,000	87,498	109,709	689,709
Fed Reim-OEA Term Prel.	834,016		0	912,558	834,016	834,016
Fed Reim-OIA Eng. Anal.	0		371,533	638,025	0	-371,533
Fed Reim-OIA Eng & Env S	126,864		538,133	1,547,726	126,864	-411,269
Fed Reim-OIA Infrastructure	336,220		1,138,424	1,547,726	336,220	-802,204
Fed Reim-FEMA Typh. Ting	0		0	12,892	0	0
Acquisition of Interoperable Comm.Equip	0	573,694	0		-573,694	0
ComprehensivePort WideVideo Surveillance System	0	26,306	0		-26,306	0
FY2010 USDA	10,000		0		10,000	10,000
FEDERAL REIMBURSEMENT	9,194,308	5,020,604	4,720,467	7,222,552	4,173,704	4,473,842
INSURANCE SETTLEMENTS						
Earthquake Insurance Settlements	0	0		1,335,026	0	0
Insurance Settlement-Other	0	210,608	0	158,561	-210,608	0
Typhoon Insurance	0	0	0	153,682	0	0
INSURANCE SETTLEMENTS	0	210,608	0	1,647,269	-210,608	0
TOTAL REIMBURSEMENTS	9,194,308	5,231,212	4,720,467	8,869,821	3,963,096	4,473,842
MISCELLANEOUS INCOME						
Interest Income-Billing	26,577	40,305	26,577	43,508	-13,727	0
Interest Income-Investment	110,872	141,112	110,872	126,799	-30,240	0
Miscellaneous Income	0	47,193	326,485	158,961	-47,193	-326,485
MISCELLANEOUS INCOME	137,449	228,610	463,935	329,268	-91,161	-326,485
GRAND TOTAL REVENUES	47,019,427	42,487,204	40,395,835	45,481,786	4,528,856	6,623,592

**FY-2012
APPROVED BUDGET
GENERAL EXPENSE**

DESCRIPTION	FY-2012 Approved Budget	FY-2011 Approved Budget	FY-2011 Antcpd EOY	FY-2010 YTD Actuals 09/30/10	FY-12 Appr vs FY-11 Appr	FY-12 Appr vs FY-11 Antcpd
CONTRACTUAL						
Agency Fees	50,000	60,000	36,012	38,146	-10,000	13,988
Arbitrator Services	3,438	3,438	1,853	2,479	0	1,584
Audit & Accounting Fees	50,000	40,376	62,877	40,992	9,624	-12,877
Bank Service Fee - BOH	0		0	181	0	0
Bank Service Fee - BOG	800	500	733	323	300	67
Crane Certification	8,597	8,597	0	21,717	0	8,597
Crane Consultant	0		0	31,500	0	0
Equipment Rental Service	0		0	8,823	0	0
Gantry III Mechanics Salary	0		0	14,947	0	0
Gantry III Mechanics Fringe Benefits	0		0	-6,489	0	0
Gantry III Mechanics Overtime	0		0	6,144	0	0
Gantry III Maintenance-Parts	231,489	430,000	198,212	516,600	-198,511	33,277
Gantry III CIP (Misc)	0		0	767	0	0
Gantry III Outside Labor	189,208	257,200	1,130,889	428,529	-67,992	-941,681
Overtime PAG Welders	50,000	50,000	0	0	0	50,000
GEDA Land Lease	0		0	87,053	0	0
Insurance	1,992,682	2,381,993	1,813,496	2,380,452	-389,311	179,186
Insurance Appraisal Service	0		7,000		0	-7,000
Insurance Brokerage	253,000	245,000	220,000		8,000	33,000
Insurance Risk Manager	48,000	58,000	42,667	10,937	-10,000	5,333
Labor Relation Services	0		0	81,208	0	0
Legal Counsel	200,000	250,000	424,887	676,222	-50,000	-224,887
Legal Counsel - AG	85,000	105,000	53,636		-20,000	31,364
Medical Exams	20,000	25,000	17,013	1,325	-5,000	2,987
PMC Management Fee	400,000	700,000	0		-300,000	400,000
Port Development	0		0	293,672	0	0
Port Master Plan	50,000	100,000	1,034,836	97,725	-50,000	-984,836
PUC Consultant	200,000	100,000	22,073	57,875	100,000	177,927
PUC Assessment Fee	50,000	100,000	60,000	4,500	-50,000	-10,000
Position Class, Compensation & Benefits Study	25,000		44,667		25,000	-19,667
Privatization Consultants	0		0	25,500	0	0
Tariff Study	120,000	120,000	21,867	170,000	0	98,133
Mobil Manager's Fee	84,380	83,275	81,583	73,899	1,105	2,797
Shell Manager's Fee	296,777	360,000	309,705	463,484	-63,223	-12,928
TOTAL CONTRACTUAL	4,408,371	5,478,379	5,584,006	5,528,511	-1,070,008	-1,175,636
COMMUNICATIONS						
Internet Access	55,000	55,000	44,383	44,111	0	10,617
Long Distance	500	500	4,079	46	0	-3,579
Telephone	62,000	60,000	59,971	56,015	2,000	2,029
Telephone System Maintenance	1,600	800	1,671	45	800	-71
TOTAL COMMUNICATIONS	119,100	116,300	110,103	100,217	2,800	8,997
MISCELLANEOUS						
Board of Director's Expense	5,000	5,000	3,319	3,600	0	1,681
Drug Program	20,000	25,000	3,760	9,825	-5,000	16,240
Entertainment	0		0	134	0	0
Port Incentive Awards	15,000	20,000	9,672	38,833	-5,000	5,328
Workmen's Compensation	140,000	150,000	121,011	92,815	-10,000	18,989
TOTAL MISCELLANEOUS	180,000	200,000	137,761	145,207	-20,000	42,239
OTHERS						
Bad Debt Writeoff	20,000	50,000	7	741,617	-30,000	19,993
Claims Cargo Shortage	45,000	25,000	67	1,500	20,000	44,933
Claims-Legal Settlement	10,000	10,000	869	4,000	0	9,131
Interest Expense - USDA	0		2,100		0	-2,100
General Maintenance	0		0	13,874	0	0
Maintenance-Buildings	0		23,007	401	0	-23,007
Maintenance-PAG Mobil	72,000	72,000	72,000	72,000	0	0
Maintenance-PAG SHELL	30,000		29,748		30,000	252
Power	1,250,000	1,300,000	1,331,149	1,303,369	-50,000	-81,149
Trash Removal	180,000	120,000	126,245	117,187	60,000	53,755
Violation-NonCompliance	5,000	5,000	13,800		0	-8,800
Water	800,000	800,000	1,241,369	1,089,847	0	-441,369
TOTAL OTHERS	2,412,000	2,382,000	2,840,361	3,343,795	30,000	-428,361
DEPRECIATION EXPENSE						
Depreciation	2,905,802	2,905,802	3,037,295	2,809,668	0	-131,493
Miscellaneous			0	8,143	0	0
TOTAL DEPRECIATION EXPENSE	2,905,802	2,905,802	3,037,295	2,817,811	0	-131,493
TOTAL GENERAL EXPENSE	10,025,273	11,082,480	11,709,526	11,935,541	-1,057,208	-1,684,254

**FY-2012
APPROVED BUDGET
GENERAL EXPENSE**

DESCRIPTION	FY-2012 Approved Budget	FY-2011 Approved Budget	FY-2011 Antcpd EOY	FY-2010 YTD Actuals 09/30/10	FY-12 Appr vs FY-11 Appr	FY-12 Appr vs FY-11 Antcpd
NON-OPERATING EXPENSE						
Homeland Security	0		73,383	14,677	0	-73,383
Interest Expense-\$3.5 mil USDA GL	206,385	213,589	176,347		-7,204	30,038
Interest Expense-\$25 mil USDA DL	0	995,295	0		-995,295	0
Payment In Lieu of Taxes	700,000		0		700,000	700,000
Loss on Asset Disposals	0		35,376	14,433	0	-35,376
Retirement COLA Benefits	350,000	317,990	342,100	1,344,200	32,010	7,900
Retirees Gov't Contribution (Med,Den,Life)	1,600,000	1,145,507	1,497,793	1,100,439	454,493	102,207
Retirement Supplemental Benefits	400,000	632,251	385,559	607,934	-232,251	14,441
Typhoon Preparation			0	-3	0	0
Typhoon Expense			0	-3	0	0
TOTAL NON OPERATING EXPENSE	3,256,385	3,304,631	2,510,557	3,081,677	-48,247	745,827
MISCELLANEOUS EXPENSE						
Deep Draft Wharf	0		0		0	0
TOTAL MISCELLANEOUS EXPENSE	0	0	0	0	0	0
TOTAL NON DIVISIONAL/GENERAL EXPENSE	13,281,657	14,387,112	14,220,084	15,017,218	-1,105,455	-938,426

**FY-2012
APPROVED BUDGET
DIVISIONAL SUMMARY**

<i>Division</i>	FY-2012 Approved Budget	FY-2011 Approved Budget	FY-2011 Antcpd EOY	FY-2010 YTD Actuals 09/30/10	FY-12 Appr vs FY-11 Appr	FY-12 Appr vs FY-11 Antcpd
General Mgr/Deputy Gen. Mgr	448,699	405,995	296,906	330,779	42,704	151,793
Harbor Master	705,856	696,934	644,452	661,687	8,922	61,404
Port Police	1,914,815	1,850,625	1,839,131	1,769,634	64,190	75,684
Occupational & Safety	431,191	356,746	333,295	295,296	74,445	97,896
Strategic Planning	753,777	647,831	622,036	490,739	105,946	131,742
Public Relations/Marketing	310,103	267,854	230,147	231,488	42,249	79,957
Operations Manager	380,363	296,924	299,683	244,142	83,439	80,680
Stevedoring	3,057,449	2,918,458	2,899,485	2,691,734	138,991	157,964
Terminal	1,951,501	1,853,633	1,809,182	1,540,247	97,867	142,319
Transportation	4,499,010	4,131,999	4,191,384	3,713,336	367,011	307,626
Maintenance	4,501,478	4,315,145	3,706,550	3,924,444	186,333	794,928
Facility Maintenance	1,608,919	1,521,581	1,394,314	1,328,959	87,337	214,604
Corporate Services	178,311	207,736	202,890	187,128	-29,426	-24,580
Administrative Services	254,911	202,582	161,562	149,221	52,328	93,349
Human Resources	545,755	503,957	449,558	474,981	41,798	96,197
Procurement/Supply	680,832	687,404	471,302	463,540	-6,572	209,530
Engineering/CIP	297,591	379,742	260,235	277,733	-82,152	37,356
Commercial	555,155	463,760	428,934	370,372	91,394	126,221
Information Technology	701,635	888,492	526,618	462,293	-186,857	175,016
Finance	1,284,532	1,199,049	1,151,905	954,576	85,482	132,627
TOTAL DIVISION/SECTION EXPENSE	25,061,882	23,796,450	21,919,568	20,562,330	1,265,432	3,142,314
Employee Count						
Classified	362	336	342	324	9	-6
Unclassified	2	1	3	3	-2	-2
Long Term Disability	4	4	7	6	-3	-3
Casual			0	1	-1	0
Vacant	16	16	10	35	11	6
New Vacant - Casual	8	18	6	0	-1	12
New Vacant	7	19	4	3	9	15
NO. OF EMPLOYEE	399	394	372	372	22	22

**FY-2012
APPROVED BUDGET**

BUSINESS UNIT: 101	SECTION: GENERAL MANAGER'S OFFICE					
OBJECT CLASSIFICATION/ITEM	FY-2012 Approved Budget	FY-2011 Approved Budget	FY-2011 Antcpd EOY	FY-2010 YTD Actuals 09/30/10	FY-12 Appr vs FY-11 Appr	FY-12 Appr vs FY-11 Antcpd
PERSONNEL SERVICES						
Management & Employee Salaries	320,878	276,875	200,655	219,058	44,004	120,224
Holiday Work	0		-		0	0
Sick Leave Used	0		7,813	4,483	0	-7,813
Annual Leave Taken	0		11,017	22,627	0	-11,017
Sick Leave Taken	0		-	3,314	0	0
Comp Time Taken	0		-		0	0
Regular Salaries	320,878	276,875	219,485	249,482	44,004	101,394
Night Differential/Hazard Pay	0				0	0
Overtime	0				0	0
TOTAL PERSONNEL SERVICES	320,878	276,875	219,485	249,482	44,004	101,394
PERSONNEL BENEFITS						
Retirement (27.46%)	88,113	76,030	58,027	57,606	12,083	30,086
Death & Disability	1,978	1,794	1,351	1,456	184	627
Hospital Insurance	3,607	13,140	6,598	6,148	-9,534	-2,991
Life Insurance	696	652	240	573	43	455
Dental Insurance	374	838	577	615	-464	-203
Medicare	4,653	4,015	3,159	3,477	638	1,494
TOTAL PERSONNEL BENEFITS	99,421	96,469	69,952	69,875	2,952	29,469
MATERIALS & SUPPLIES						
Office Supplies	2,100	1,551	2,107	1,642	549	-7
Operational Supplies	0	500			-500	0
TOTAL MATERIALS & SUPPLIES	2,100	2,051	2,107	1,642	49	-7
CONTRACTUALS						
Professional Services	300	300	13		0	287
TOTAL CONTRACTUALS	300	300	13	-	0	287
Furnishing & Equipment						
Office Equipment	2,000	3,700	-	1,753	-1,700	2,000
TOTAL FURNISHING & EQUIPMENT	2,000	3,700	-	1,753	-1,700	2,000
Miscellaneous						
Dues & Subscriptions	18,000	20,100	303	1,214	-2,100	17,697
Entertainment	6,000	6,500	5,040	6,813	-500	960
TOTAL MISCELLANEOUS	24,000	26,600	5,344	8,027	-2,600	18,656
DEPARTMENT TOTAL	448,699	405,995	296,901	330,779	42,704	151,798
Employee Count						
Classified	2	2	2	2	0	0
Unclassified	2	1	2	2	1	0
Long Term Disability					0	0
Vacant		1			-1	0
New					0	0
Total Employee Count	4	4	4	4	0	0

FY-2012
APPROVED BUDGET

BUSINESS UNIT: 121		SECTION: HARBOR MASTER DIVISION				
OBJECT CLASSIFICATION/ITEM	FY-2012 Approved Budget	FY-2011 Approved Budget	FY-2011 Antcpd EOY	FY-2010 YTD Actuals 09/30/10	FY-12 Appr vs FY-11 Appr	FY-12 Appr vs FY-11 Antcpd
PERSONNEL SERVICES						
Management & Employee Salaries	493,393	508,274	392,598	436,085	-14,881	100,796
Holiday Work	10,428	1,326	10,428	4,229	9,103	0
Sick Leave Used	0		19,275	15,987	0	-19,275
Annual Leave Taken	0		34,507	29,494	0	-34,507
Sick Leave Taken	0		-	8,430	0	0
Comp Time Taken	0		363	496	0	-363
Typhoon Salaries	0		-	903	0	0
Regular Salaries	503,822	509,600	457,171	495,624	-5,778	46,651
Night Differential/Hazard Pay	13,376	14,330	12,862	13,626	-953	514
Overtime	5,000	1,557	19,458	4,780	3,443	-14,458
TOTAL PERSONNEL SERVICES	522,198	525,487	489,490	514,030	-3,289	32,708
PERSONNEL BENEFITS						
Retirement (27.46%)	135,486	139,572	129,055	126,542	-4,086	6,431
Death & Disability	3,462	1,914	2,294	1,736	1,548	1,168
Hospital Insurance	23,266	18,939	14,059	10,533	4,328	9,207
Life Insurance	2,087	1,739	1,722	1,733	348	365
Dental Insurance	1,953	1,284	994	1,145	669	960
Medicare	7,154	4,878	5,135	4,868	2,276	2,020
TOTAL PERSONNEL BENEFITS	173,409	168,326	153,259	146,557	5,083	20,150
MATERIALS & SUPPLIES						
Office Supplies	404	404	237	375	0	167
Operational Supplies	320	170	55	155	150	265
TOTAL MATERIALS & SUPPLIES	724	574	292	530	150	432
CONTRACTUALS						
Communication Maintenance	1,500	1,400	130	140	100	1,370
Professional Services	500		-		500	500
Underwater Diving Services	3,500		-		3,500	3,500
TOTAL CONTRACTUALS	5,500	1,400	130	140	4,100	5,370
Furnishing & Equipment						
Communication Equipment	750	1,000	-		-250	750
Office Equipment	3,000		1,280	430	3,000	1,720
Safety Equipment			-		0	0
TOTAL FURNISHING & EQUIPMENT	3,750	1,000	1,280	430	2,750	2,470
Miscellaneous						
Dues & Subscriptions	275	148	-		127	275
TOTAL MISCELLANEOUS	275	148	-	-	127	275
DEPARTMENT TOTAL	705,856	696,934	644,452	661,687	8,922	61,404
Employee Count						
Classified	12	10	10	10	2	2
Unclassified					0	0
Long Term Disability					0	0
Vacant	1				1	1
New		1			-1	0
Total Employee Count	13	10	10	10	3	3

**FY-2012
APPROVED BUDGET**

BUSINESS UNIT: 122	SECTION: PORT POLICE DIVISION					
OBJECT CLASSIFICATION/ITEM	FY-2012 Approved Budget	FY-2011 Approved Budget	FY-2011 Antcpd EOY	FY-2010 YTD Actuals 09/30/10	FY-12 Appr vs FY-11 Appr	FY-12 Appr vs FY-11 Antcpd
PERSONNEL SERVICES						
Management & Employee Salaries	1,277,432	1,249,473	1,066,066	1,058,596	27,959	211,366
Holiday Work	38,395	4,475	38,395	13,842	33,920	0
Sick Leave Used	0		27,661	33,006	0	-27,661
Annual Leave Taken	0		69,436	88,056	0	-69,436
Sick Leave Taken	0		-	23,237	0	0
Comp Time Taken	0		49,505	32,976	0	-49,505
Typhoon Salaries	0		-	2,077	0	0
Regular Salaries	1,315,827	1,253,948	1,251,063	1,251,790	61,879	64,764
Night Differential/Hazard Pay	39,278	39,919	37,768	38,009	-641	1,511
Overtime	40,000	40,000	52,981	37,899	0	-12,981
TOTAL PERSONNEL SERVICES	1,395,106	1,333,867	1,341,812	1,327,698	61,238	53,294
PERSONNEL BENEFITS						
Retirement (27.46%)	350,783	343,105	342,853	324,638	7,678	7,930
Death & Disability	11,868	12,199	11,398	10,756	-331	471
Hospital Insurance	78,220	81,426	87,028	54,676	-3,206	-8,808
Life Insurance	5,218	5,479	5,461	5,736	-261	-243
Dental Insurance	5,546	5,592	6,175	6,684	-46	-628
Medicare	15,231	14,013	18,423	17,684	1,218	-3,192
TOTAL PERSONNEL BENEFITS	466,867	461,815	471,336	420,174	5,052	-4,470
MATERIALS & SUPPLIES						
Office Supplies	3,000	3,000	1,510	2,067	0	1,490
Operational Supplies	19,943	19,943	22,900	19,609	0	-2,957
TOTAL MATERIALS & SUPPLIES	22,943	22,943	24,410	21,676	0	-1,467
CONTRACTUALS						
Professional Services	0	6,000	-		-6,000	0
TOTAL CONTRACTUALS	0	6,000	-		-6,000	0
Furnishing & Equipment						
Communication Equipment			-		0	0
Office Equipment	6,000	2,000	-	86	4,000	6,000
Safety Equipment	5,000	5,000	1,573		0	3,427
Shop Equipment	18,000	18,000	-		0	18,000
TOTAL FURNISHING & EQUIPMENT	29,000	25,000	1,573	86	4,000	27,427
Miscellaneous						
Dues & Subscriptions	900	1,000			-100	900
TOTAL MISCELLANEOUS	900	1,000	-		-100	900
DEPARTMENT TOTAL	1,914,815	1,850,625	1,839,131	1,769,634	64,190	75,684
Employee Count						
Classified	30	30	32	31	0	-2
Unclassified					0	0
Long Term Disability	2	2	2	2	0	0
Vacant	3	1	1	2	2	2
New-In House	2	2			0	2
Total Employee Count	35	33	35	35	2	2

**FY-2012
APPROVED BUDGET**

BUSINESS UNIT: 123		SECTION: OCCUPATIONAL HEALTH AND SAFETY DIVISION				
OBJECT CLASSIFICATION/ITEM	FY-2012 Approved Budget	FY-2011 Approved Budget	FY-2011 Antcpd EOY	FY-2010 YTD Actuals 09/30/10	FY-12 Appr vs FY-11 Appr	FY-12 Appr vs FY-11 Antcpd
PERSONNEL SERVICES						
Management & Employee Salaries	264,648	236,502	196,771	175,967	28,146	67,877
Holiday Work	2,119		2,119		2,119	0
Sick Leave Used	0		13,556	2,492	0	-13,556
Annual Leave Taken	0		17,310	9,076	0	-17,310
Sick Leave Taken	0		-	3,802	0	0
Comp Time Taken	0		-		0	0
Regular Salaries	266,767	236,502	229,757	191,337	30,265	37,010
Night Differential/Hazard Pay	2,991	3,241	2,876	2,930	-250	115
Overtime	9,500	9,500	3,904	9,364	0	5,596
TOTAL PERSONNEL SERVICES	279,258	249,243	236,537	203,631	30,015	42,721
PERSONNEL BENEFITS						
Retirement (27.46%)	72,410	64,944	62,960	47,960	7,467	9,451
Death & Disability	2,473	1,914	1,754	1,178	559	719
Hospital Insurance	17,092	18,024	12,993	8,812	-932	4,099
Life Insurance	1,218	1,044	852	735	174	366
Dental Insurance	1,103	1,089	790	806	14	314
Medicare	3,837	3,429	3,430	2,884	408	408
TOTAL PERSONNEL BENEFITS	98,133	90,443	82,778	62,375	7,690	15,356
MATERIALS & SUPPLIES						
Office Supplies	800	600	856	381	200	-56
Operational Supplies	12,000		368		12,000	11,632
TOTAL MATERIALS & SUPPLIES	12,800	600	1,224	381	12,200	11,576
Furnishing & Equipment						
Office Equipment	0	900	292		-900	-292
Safety Equipment	41,000	7,000	12,464	28,869	34,000	28,536
TOTAL FURNISHING & EQUIPMENT	41,000	7,900	12,756	28,869	33,100	28,244
Miscellaneous						
Dues & Subscriptions	0	1,560	-		-1,560	0
Emergency Response	0	7,000	-	40	-7,000	0
TOTAL MISCELLANEOUS	0	8,560	-	40	-8,560	0
DEPARTMENT TOTAL	431,191	356,746	333,295	295,296	74,445	97,896
Employee Count						
Classified	6	6	5	4	0	1
Unclassified					0	0
Long Term Disability					0	0
Vacant				1	0	0
New-In House	1	1			0	1
Total Employee Count	6	6	5	5	0	1

**FY-2012
APPROVED BUDGET**

BUSINESS UNIT: 145	SECTION: STRATEGIC PLANNING DIVISION					
OBJECT CLASSIFICATION/ITEM	FY-2012 Approved Budget	FY-2011 Approved Budget	FY-2011 Antcpd EOY	FY-2010 YTD Actuals 09/30/10	FY-12 Appr vs FY-11 Appr	FY-12 Appr vs FY-11 Antcpd
PERSONNEL SERVICES						
Management & Employee Salaries	547,183	474,070	423,784	318,881	73,113	123,399
Holiday Work	0		-		0	0
Sick Leave Used	0		9,944	12,518	0	-9,944
Annual Leave Taken	0		34,257	31,387	0	-34,257
Sick Leave Taken	0		-	8,671	0	0
Comp Time Taken	0		-		0	0
Regular Salaries	547,183	474,070	467,984	371,457	73,113	79,198
Night Differential/Hazard Pay	0		-		0	0
Overtime	0		-		0	0
TOTAL PERSONNEL SERVICES	547,183	474,070	467,984	371,457	73,113	79,198
PERSONNEL BENEFITS						
Retirement (27.46%)	150,256	130,180	125,655	98,833	20,077	24,601
Death & Disability	3,940	3,349	2,874	2,044	591	1,066
Hospital Insurance	17,112	22,403	13,925	10,332	-5,291	3,187
Life Insurance	1,565	1,392	1,333	1,415	174	232
Dental Insurance	1,496	1,487	1,209	1,069	9	288
Medicare	6,750	5,747	5,378	3,992	1,003	1,372
TOTAL PERSONNEL BENEFITS	181,120	164,557	150,374	117,685	16,563	30,746
MATERIALS & SUPPLIES						
Office Supplies	5,579	5,000	3,677	1,159	579	1,902
Operational Supplies	1,500		-		1,500	1,500
TOTAL MATERIALS & SUPPLIES	7,079	5,000	3,677	1,159	2,079	3,402
CONTRACTUALS						
General Service & Maintenance	2,500				2,500	2,500
Printing Services	3,000	4,204	-		-1,204	3,000
TOTAL CONTRACTUALS	5,500	4,204	-	-	1,296	5,500
Furnishing & Equipment						
Office Equipment	12,830		-	438	12,830	12,830
Safety Equipment	65		-		65	65
TOTAL FURNISHING & EQUIPMENT	12,895	-	-	438	12,895	12,895
DEPARTMENT TOTAL	753,777	647,831	622,036	490,739	105,946	131,742
Employee Count						
Classified	9	8	5	8	1	4
Unclassified			1		0	-1
Long Term Disability			1		0	-1
Vacant			1		0	-1
New					0	0
Total Employee Count	9	8	8	8	1	1

**FY-2012
APPROVED BUDGET**

BUSINESS UNIT: 150		SECTION: MARKETING/PUBLIC RELATIONS DIVISION				
OBJECT CLASSIFICATION/ITEM	FY-2012 Approved Budget	FY-2011 Approved Budget	FY-2011 Antcpd EOY	FY-2010 YTD Actuals 09/30/10	FY-12 Appr vs FY-11 Appr	FY-12 Appr vs FY-11 Antcpd
PERSONNEL SERVICES						
Management & Employee Salaries	204,727	163,303	140,211	143,506	41,424	64,516
Holiday Work	0		-		0	0
Sick Leave Used	0		20,117	5,723	0	-20,117
Annual Leave Taken	0		7,426	7,210	0	-7,426
Sick Leave Taken	0		-	3,834	0	0
Comp Time Taken	0		-		0	0
Regular Salaries	204,727	163,303	167,754	160,273	41,424	36,973
Night Differential/Hazard Pay	0		-		0	0
Overtime	0		-		0	0
TOTAL PERSONNEL SERVICES	204,727	163,303	167,754	160,273	41,424	36,973
PERSONNEL BENEFITS						
Retirement (27.46%)	56,218	44,843	45,997	40,344	11,375	10,221
Death & Disability	1,467	957	959	870	511	509
Hospital Insurance	10,370	8,785	9,126	5,369	1,585	1,244
Life Insurance	696	522	512	524	174	184
Dental Insurance	598	398	407	388	200	190
Medicare	1,896	1,348	2,326	2,194	549	-429
TOTAL PERSONNEL BENEFITS	71,246	56,852	59,327	49,689	14,394	11,919
MATERIALS & SUPPLIES						
Office Supplies	1,900	2,120	1,199	1,409	-220	701
TOTAL MATERIALS & SUPPLIES	1,900	2,120	1,199	1,409	-220	701
CONTRACTUALS						
Advertising	0	6,100	-	2,686	-6,100	0
Photo Services	0		-	3,483	0	0
Other Contractual Services (Crtv. Dsgn)	27,000	39,079			-12,079	27,000
Professional Services	4,500				4,500	4,500
TOTAL CONTRACTUALS	31,500	45,179	-	6,169	-13,679	31,500
Furnishing & Equipment						
Office Equipment	0		-	600	0	0
Safety Equipment	330				330	330
TOTAL FURNISHING & EQUIPMENT	330	0	-	600	330	330
Miscellaneous						
Dues & Subscriptions	400	400	-	13,348	0	400
TOTAL MISCELLANEOUS	400	400	-	13,348	0	400
DEPARTMENT TOTAL	310,103	267,854	228,280	231,488	42,249	81,823
Employee Count						
Classified	4	3	3	3	1	1
Unclassified					0	0
Long Term Disability					0	0
Vacant					0	0
New						
Total Employee Count	4	3	3	3	1	1

**FY-2012
APPROVED BUDGET**

BUSINESS UNIT: 300		SECTION: OPERATIONS MANAGER				
OBJECT CLASSIFICATION/ITEM	FY-2012 Approved Budget	FY-2011 Approved Budget	FY-2011 Antcpd EOY	FY-2010 YTD Actuals 09/30/10	FY-12 Appr vs FY-11 Appr	FY-12 Appr vs FY-11 Antcpd
PERSONNEL SERVICES						
Management & Employee Salaries	285,877	222,439	221,988	170,462	63,438	63,890
Holiday Work	0		-		0	0
Sick Leave Used	0		2,499	9,170	0	-2,499
Annual Leave Taken	0		3,469	7,153	0	-3,469
Sick Leave Taken	0		-	5,312	0	0
Comp Time Taken	0		-		0	0
Regular Salaries	285,877	222,439	227,956	192,097	63,438	57,922
Night Differential/Hazard Pay	0		-		0	0
Overtime	0		-		0	0
TOTAL PERSONNEL SERVICES	285,877	222,439	227,956	192,097	63,438	57,922
PERSONNEL BENEFITS						
Retirement (27.46%)	78,502	61,082	62,517	48,572	17,420	15,985
Death & Disability	1,978	1,435	1,422	968	543	556
Hospital Insurance	8,918	6,398	4,840	373	2,520	4,078
Life Insurance	1,044	696	593	570	348	450
Dental Insurance	600	439	251	56	161	350
Medicare	2,684	1,834	1,893	1,384	849	790
TOTAL PERSONNEL BENEFITS	93,725	71,884	71,516	51,923	21,841	22,209
MATERIALS & SUPPLIES						
Office Supplies	160	160	211	122	0	-51
Operational Supplies	200		-		200	200
TOTAL MATERIALS & SUPPLIES	360	160	211	122	200	149
Furnishing & Equipment						
Office Equipment	400	2,140	-		-1,740	400
TOTAL FURNISHING & EQUIPMENT	400	2,140	-	-	-1,740	400
Miscellaneous						
Dues & Subscriptions	0	300	-		-300	0
TOTAL MISCELLANEOUS	0	300	-	-	-300	0
DEPARTMENT TOTAL	380,363	296,924	299,683	244,142	83,439	80,680
Employee Count						
Classified	6	3	5	4	3	1
Unclassified					0	0
Long Term Disability					0	0
Vacant		1		1	-1	0
New					0	0
Total Employee Count	6	4	5	5	2	1

**FY-2012
APPROVED BUDGET**

BUSINESS UNIT: 310-313		SECTION: STEVEDORING DIVISON				
OBJECT CLASSIFICATION/ITEM	FY-2012 Approved Budget	FY-2011 Approved Budget	FY-2011 Antcpd EOY	FY-2010 YTD Actuals 09/30/10	FY-12 Appr vs FY-11 Appr	FY-12 Appr vs FY-11 Antcpd
PERSONNEL SERVICES						
Management & Employee Salaries	2,002,222	1,933,418	1,756,548	1,636,894	68,803	245,674
Holiday Work	41,862	1,416	41,862	9,631	40,446	0
Sick Leave Used	0		49,755	50,886	0	-49,755
Annual Leave Taken	0		90,499	95,472	0	-90,499
Sick Leave Taken	0		-	25,304	0	0
Comp Time Taken	0		97	1,899	0	-97
Typhoon Salaries	0		-	12	0	0
Regular Salaries	2,044,084	1,934,834	1,938,761	1,820,098	109,249	105,323
Night Differential/Hazard Pay	122,756	103,759	118,035	101,252	18,998	4,721
Overtime	140,000	155,000	115,073	139,781	-15,000	24,927
TOTAL PERSONNEL SERVICES	2,306,840	2,193,593	2,171,869	2,061,131	113,247	134,971
PERSONNEL BENEFITS						
Retirement (27.46%)	549,810	530,917	543,319	480,156	18,893	6,491
Death & Disability	21,759	21,050	20,429	17,784	709	1,330
Hospital Insurance	109,692	122,812	117,710	69,818	-13,120	-8,017
Life Insurance	9,567	522	8,654	8,640	9,045	913
Dental Insurance	8,095	7,611	7,630	6,818	483	465
Medicare	26,187	25,354	26,809	25,227	833	-622
TOTAL PERSONNEL BENEFITS	725,109	708,265	724,550	608,443	16,844	559
MATERIALS & SUPPLIES						
Office Supplies	1,500	1,000	2,191	848	500	-691
Operational Supplies	24,000	7,600	874	21,312	-4,600	2,126
TOTAL MATERIALS & SUPPLIES	25,500	8,600	3,066	22,160	-4,100	1,434
Furnishing & Equipment						
Safety Equipment	0	8,000			-8,000	0
TOTAL FURNISHING & EQUIPMENT	0	8,000	-	-	(8,000)	-
DEPARTMENT TOTAL	3,057,449	2,918,458	2,899,485	2,691,734	117,991	136,964
Employee Count						
Classified	53	52	50	50	1	3
Unclassified					0	0
Long Term Disability					0	0
Casual			1	1	0	-1
Vacant	2	2	10	10	0	-8
Vacant-Casual	4	6			-2	4
New Vacant-Casual		1			-1	0
New Vacant		0			0	0
Total Employee Count	59	61	61	61	-2	-2

**FY-2012
APPROVED BUDGET**

BUSINESS UNIT: 320		SECTION: TERMINAL DIVISION				
OBJECT CLASSIFICATION/ITEM	FY-2012 Approved Budget	FY-2011 Approved Budget	FY-2011 Antcpd EOY	FY-2010 YTD Actuals 09/30/10	FY-12 Appr vs FY-11 Appr	FY-12 Appr vs FY-11 Antcpd
PERSONNEL SERVICES						
Management & Employee Salaries	1,355,823	1,300,711	1,113,355	991,660	55,112	242,468
Holiday Work	21,173	426	21,173	4,921	20,747	0
Sick Leave Used	0		53,536	36,941	0	-53,536
Annual Leave Taken	0		67,637	71,213	0	-67,637
Sick Leave Taken	0		-	10,969	0	0
Comp Time Taken	0		1,624	3,886	0	-1,624
Typhoon Salaries	0		-		0	0
Regular Salaries	1,376,996	1,301,137	1,257,325	1,119,590	75,859	119,670
Night Differential/Hazard Pay	35,895	25,131	34,514	24,988	10,764	1,381
Overtime	22,000	20,772	21,536	28,780	1,228	464
TOTAL PERSONNEL SERVICES	1,434,890	1,347,039	1,313,375	1,173,358	87,851	121,515
PERSONNEL BENEFITS						
Retirement (27.46%)	372,309	357,175	346,665	286,660	15,134	25,644
Death & Disability	15,330	14,113	13,241		1,217	2,089
Hospital Insurance	86,406	98,572	93,045	47,752	-12,166	-6,639
Life Insurance	6,610	6,697	5,804	5,251	-87	806
Dental Insurance	6,878	5,957	5,930	4,177	921	948
Medicare	19,127	18,349	18,103	16,208	778	1,024
TOTAL PERSONNEL BENEFITS	506,660	500,862	482,788	360,048	5,798	23,873
MATERIALS & SUPPLIES						
Office Supplies	8,000	5,732	8,139	6,841	2,268	-139
Operational Supplies	1,950		72		1,950	1,879
TOTAL MATERIALS & SUPPLIES	9,950	5,732	8,211	6,841	4,218	1,739
Furnishing & Equipment						
Office Equipment	0		4,469		0	-4,469
Power & Hand Tools	0		339		0	-339
TOTAL FURNISHING & EQUIPMENT	0	0	4,808	-	0	-4,808
DEPARTMENT TOTAL	1,951,501	1,853,633	1,809,182	1,540,247	97,867	142,319
Employee Count						
Classified	36	35	34	33	1	2
Unclassified					0	0
Long Term Disability					0	0
Casual					0	0
Vacant	4	2	5	6	2	-1
Vacant - Casual					0	0
New Vacant		3			-3	0
Total Employee Count	40	40	39	39	0	1

**FY-2012
APPROVED BUDGET**

BUSINESS UNIT: 330-333		SECTION: TRANSPORTATION DIVISION				
OBJECT CLASSIFICATION/ITEM	FY-2012 Approved Budget	FY-2011 Approved Budget	FY-2011 Antcpd EOY	FY-2010 YTD Actuals 09/30/10	FY-12 Appr vs FY-11 Appr	FY-12 Appr vs FY-11 Antcpd
PERSONNEL SERVICES						
Management & Employee Salaries	2,691,540	2,618,757	2,198,312	2,030,717	72,783	493,228
Holiday Work	54,001	879	54,001	11,035	53,121	0
Sick Leave Used	0		84,180	70,952	0	-84,180
Annual Leave Taken	0		157,234	166,167	0	-157,234
Sick Leave Taken	0		-	20,832	0	0
Comp Time Taken	0		547	1,892	0	-547
Typhoon Salaries	0		-	388	0	0
Regular Salaries	2,745,540	2,619,636	2,494,274	2,301,983	125,904	251,266
Night Differential/Hazard Pay	134,339	113,424	129,172	109,575	20,915	5,167
Overtime	84,000	80,000	114,210	78,001	4,000	-30,210
TOTAL PERSONNEL SERVICES	2,963,880	2,813,060	2,737,656	2,489,559	150,820	226,224
PERSONNEL BENEFITS						
Retirement (27.46%)	738,648	719,111	717,938	612,817	19,537	20,710
Death & Disability	20,770	18,179	17,931	15,520	2,591	2,839
Hospital Insurance	182,728	172,475	180,618	119,746	10,253	2,110
Life Insurance	12,002	11,306	10,932	11,252	696	1,070
Dental Insurance	13,353	10,860	11,425	13,298	2,493	1,928
Medicare	35,457	34,568	34,907	31,602	889	550
TOTAL PERSONNEL BENEFITS	1,002,958	966,499	973,751	804,235	36,460	29,207
MATERIALS & SUPPLIES						
Office Supplies	800	800	182	749	0	618
Operational Supplies	2,500	1,100	991	706	1,400	1,509
Gas	77,000	50,000	78,797	90,130	27,000	-1,797
Diesel	400,000	280,000	397,809	327,236	120,000	2,191
Oil			2,198		0	-2,198
TOTAL MATERIALS & SUPPLIES	480,300	331,900	479,977	418,821	148,400	323
CONTRACTUALS						
Equipment Rental	50,000	20,090	-	560	29,910	50,000
TOTAL CONTRACTUALS	50,000	20,090	-	560	29,910	50,000
Furnishing & Equipment						
Communication Equipment	1,422				1,422	1,422
Safety Equipment	450	450	-	27	0	450
TOTAL FURNISHING & EQUIPMENT	1,872	450	-	27	1,422	1,872
Miscellaneous						
Safety Check	0			135	0	0
TOTAL MISCELLANEOUS	0	-	-	135	0	0
DEPARTMENT TOTAL	4,499,010	4,131,999	4,191,384	3,713,336	367,011	307,626
Employee Count						
Classified	66	64	64	63	2	2
Unclassified					0	0
Long Term Disability	1	1			0	1
Casual					0	0
Vacant	3	1	2	4	2	1
New Vacant - Casual	4	12		3	-8	4
New Vacant			3		0	-3
Total Employee Count	74	78	69	70	-4	5

**FY-2012
APPROVED BUDGET**

BUSINESS UNIT: 400-414,430		SECTION: MAINTENANCE DIVISION				
OBJECT CLASSIFICATION/ITEM	FY-2012 Approved Budget	FY-2011 Approved Budget	FY-2011 Antcpd EOY	FY-2010 YTD Actuals 09/30/10	FY-12 Appr vs FY-11 Appr	FY-12 Appr vs FY-11 Antcpd
PERSONNEL SERVICES						
Management & Employee Salaries	2,291,567	2,105,709	1,825,405	1,668,271	185,858	466,162
Holiday Work	37,994	3,898	37,994	10,214	34,096	0
Sick Leave Used	0		76,030	69,661	0	-76,030
Annual Leave Taken	0		116,155	145,682	0	-116,155
Sick Leave Taken	0		-	25,042	0	0
Comp Time Taken	0		1,668	1,315	0	-1,668
Typhoon Salaries	0		0	839	0	0
Regular Salaries	2,329,561	2,109,607	2,057,252	1,921,024	219,954	272,309
Night Differential/Hazard Pay	199,254	194,090	191,590	193,156	5,164	7,664
Overtime	117,000	215,000	167,818	233,328	-98,000	-50,818
TOTAL PERSONNEL SERVICES	2,645,815	2,518,697	2,416,660	2,347,508	127,118	229,155
PERSONNEL BENEFITS						
Retirement (27.46%)	628,965	472,292	602,092	519,420	156,673	26,873
Death & Disability	20,275	19,136	16,533	14,495	1,139	3,742
Hospital Insurance	134,906	143,587	150,337	79,981	-8,681	-15,431
Life Insurance	9,393	9,219	8,486	8,636	174	906
Dental Insurance	7,643	8,068	9,124	8,288	-425	-1,481
Medicare	27,981	25,546	29,113	27,721	2,435	-1,133
TOTAL PERSONNEL BENEFITS	829,163	677,848	815,686	658,541	151,315	13,477
MATERIALS & SUPPLIES						
Office Supplies	2,500	2,500	734	1,242	0	1,766
Operational Supplies	850,000	886,050	433,747	893,694	-36,050	416,253
Oil		20,000			-20,000	0
TOTAL MATERIALS & SUPPLIES	852,500	908,550	434,481	894,936	-56,050	418,019
CONTRACTUALS						
Air Conditioning Repair	0	15,000	2,241	3,793	-15,000	-2,241
Engine Radiator Repairs	0	5,000	0		-5,000	0
Equipment Rental	20,000	20,000	12,080		0	7,920
General Service & Maintenance	8,000	0	0		8,000	8,000
Hydraulic Hose Replacement	10,000	8,000	0	874	2,000	10,000
Machine Shop Services	20,000	13,000	0	1,098	7,000	20,000
Other Professional Services	0	5,000	0		-5,000	0
Professional Services	20,000	30,200	0		-10,200	20,000
Rewinding Motors & Generators	20,000	5,000	0		15,000	20,000
Starter & Alternator Services	0	3,000	333	820	-3,000	-333
Tire Disposal	0	500	0		-500	0
Tire Repairs	11,000	10,000	11,025	1,755	1,000	-25
Waste Oil Disposal	30,000	40,000	5,403	10,357	-10,000	24,597
Windshield Glass Repairs	0	5,000	0	777	-5,000	0
TOTAL CONTRACTUALS	139,000	159,700	31,082	19,474	-20,700	107,918
Furnishing & Equipment						
Office Equipment	5,000	3,000	0	315	2,000	5,000
Power & Hand Tools	15,000	11,600	2,277	676	3,400	12,723
Safety Equipment	10,000	20,000	4,162	2,559	-10,000	5,838
Shop Equipment	5,000	15,750	2,203	435	-10,750	2,797
TOTAL FURNISHING & EQUIPMENT	35,000	50,350	8,641	3,985	-15,350	26,359
DEPARTMENT TOTAL	4,501,478	4,315,145	3,706,550	3,924,444	186,333	794,928
Employee Count						
Classified	51	47	48	48	4	3
Unclassified					0	0
Long Term Disability					0	0
Vacant	2	4	3	3	-2	-1
New	1	1			0	1
Total Employee Count	54	52	51	51	2	3

**FY-2012
APPROVED BUDGET**

BUSINESS UNIT: 420-423		SECTION: FACILITY DIVISION				
OBJECT CLASSIFICATION/ITEM	FY-2012 Approved Budget	FY-2011 Approved Budget	FY-2011 Antcpd EOY	FY-2010 YTD Actuals 09/30/10	FY-12 Appr vs FY-11 Appr	FY-12 Appr vs FY-11 Antcpd
PERSONNEL SERVICES						
Management & Employee Salaries	1,027,155	997,924	821,295	758,492	29,231	205,861
Holiday Work	10,953	1,744	10,953	4,092	9,209	0
Sick Leave Used	0		44,726	22,329	0	-44,726
Annual Leave Taken	0		60,318	61,156	0	-60,318
Sick Leave Taken	0		-	14,913	0	0
Comp Time Taken	0		73	296	0	-73
Typhoon Salaries	0		0	481	0	0
Regular Salaries	1,038,109	999,668	937,366	861,759	38,440	100,743
Night Differential/Hazard Pay	20,940	15,988	20,135	17,053	4,952	805
Overtime	18,000	10,000	20,496	14,465	8,000	-2,496
TOTAL PERSONNEL SERVICES	1,077,049	1,025,657	977,997	893,277	51,392	99,052
PERSONNEL BENEFITS						
Retirement (27.46%)	282,057	274,030	262,942	219,514	8,027	19,115
Death & Disability	9,890	9,568	7,270	5,365	322	2,620
Hospital Insurance	53,237	85,808	55,731	33,081	-32,571	-2,494
Life Insurance	5,044	5,392	4,140	4,133	-348	904
Dental Insurance	3,978	5,877	3,403	2,930	-1,900	575
Medicare	13,664	13,300	12,905	11,069	364	759
TOTAL PERSONNEL BENEFITS	367,870	393,975	346,391	276,092	-26,105	21,479
MATERIALS & SUPPLIES						
Office Supplies	1,000	525	39	723	475	961
Operational Supplies	93,000	92,925	69,522	109,910	75	23,478
TOTAL MATERIALS & SUPPLIES	94,000	93,450	69,561	110,633	550	24,439
CONTRACTUALS						
Equipment Rental	10,000	3,500	-		6,500	10,000
General Service & Maintenance	9,000	5,000	-		4,000	9,000
Professional Services	21,000		213	17,755	21,000	20,787
TOTAL CONTRACTUALS	40,000	8,500	213	17,755	31,500	39,787
Furnishing & Equipment						
Office Equipment	17,000		0	25,140	17,000	17,000
Power & Hand Tools	9,000		0	4,764	9,000	9,000
Safety Equipment			152	998	0	-152
Shop Equipment	3,500		-	300	3,500	3,500
TOTAL FURNISHING & EQUIPMENT	29,500	0	152	31,202	29,500	29,348
Miscellaneous						
Dues & Subscriptions	500		-		500	500
TOTAL MISCELLANEOUS	500	-	-	-	500	500
DEPARTMENT TOTAL	1,608,919	1,521,581	1,394,314	1,328,959	87,337	214,604
Employee Count						
Classified	30	26	24	23	4	6
Unclassified					0	0
Long Term Disability	1	1	1	1	0	0
Vacant	1	3	3	4	-2	-2
New		3			-3	0
Total Employee Count	32	30	28	28	-1	4

**FY-2012
APPROVED BUDGET**

BUSINESS UNIT: 600	SECTION: CORPORATE SERVICES MANAGER					
OBJECT CLASSIFICATION/ITEM	FY-2012 Approved Budget	FY-2011 Approved Budget	FY-2011 Antcpd EOY	FY-2010 YTD Actuals 09/30/10	FY-12 Appr vs FY-11 Appr	FY-12 Appr vs FY-11 Antcpd
PERSONNEL SERVICES						
Management & Employee Salaries	129,696	155,250	141,380	138,939	-25,554	-11,684
Holiday Work	0		-		0	0
Sick Leave Used	0				0	0
Annual Leave Taken	0		9,238	6,063	0	-9,238
Sick Leave Taken	0		-		0	0
Comp Time Taken	0		-		0	0
Regular Salaries	129,696	155,250	150,618	145,002	-25,554	-20,922
Night Differential/Hazard Pay	0		-		0	0
Overtime	0		-		0	0
TOTAL PERSONNEL SERVICES	129,696	155,250	150,618	145,002	-25,554	-20,922
PERSONNEL BENEFITS						
Retirement (27.46%)	35,614	42,632	41,295	36,827	-7,017	-5,680
Death & Disability	495		-		495	495
Hospital Insurance	8,200	5,381	8,490	3,281	2,819	-291
Life Insurance	348	348	341	349	0	6
Dental Insurance	600	398	616	391	203	-16
Medicare	308	709	720	682	-401	-412
TOTAL PERSONNEL BENEFITS	45,565	49,468	51,462	41,530	-3,902	-5,897
MATERIALS & SUPPLIES						
Office Supplies	1,000	1,000	810	596	0	190
TOTAL MATERIALS & SUPPLIES	1,000	1,000	810	596	0	190
CONTRACTUALS						
General Service & Maintenance	250	500			-250	250
TOTAL CONTRACTUALS	250	500	-	-	-250	250
Furnishing & Equipment						
Office Equipment	800	519	-		281	800
TOTAL FURNISHING & EQUIPMENT	800	519	-	-	281	800
Miscellaneous						
Dues & Subscriptions	1,000	1,000			0	1,000
TOTAL MISCELLANEOUS	1,000	1,000	-	-	-	1,000
DEPARTMENT TOTAL	178,311	207,736	202,890	187,128	-29,426	-24,580
Employee Count						
Classified	1	2	2	2	-1	-1
Unclassified					0	0
Long Term Disability					0	0
Vacant	1				1	1
New					0	0
Total Employee Count	2	2	2	2	0	0

**FY-2012
APPROVED BUDGET**

BUSINESS UNIT: 610		SECTION: GENERAL ADMINISTRATION DIVISION				
OBJECT CLASSIFICATION/ITEM	FY-2012 Approved Budget	FY-2011 Approved Budget	FY-2011 Antcpd EOY	FY-2010 YTD Actuals 09/30/10	FY-12 Appr vs FY-11 Appr	FY-12 Appr vs FY-11 Antcpd
PERSONNEL SERVICES						
Management & Employee Salaries	169,600	131,880	101,397	89,192	37,721	68,204
Holiday Work	177		177		177	0
Sick Leave Used	0		4,234	8,299	0	-4,234
Annual Leave Taken	0		7,443	8,762	0	-7,443
Sick Leave Taken	0		-	4	0	0
Comp Time Taken	0		-		0	0
Regular Salaries	169,778	131,880	113,251	106,257	37,898	56,526
Night Differential/Hazard Pay	0		-		0	0
Overtime	0		-		0	0
TOTAL PERSONNEL SERVICES	169,778	131,880	113,251	106,257	37,898	56,526
PERSONNEL BENEFITS						
Retirement (27.46%)	46,572	40,719	23,310	26,048	5,853	23,263
Death & Disability	2,967	957	1,439	420	2,010	1,528
Hospital Insurance	13,878	16,677	13,606	7,949	-2,799	272
Life Insurance	1,218	870	316	494	348	902
Dental Insurance	1,579	927	811	643	652	768
Medicare	2,459	1,912	1,562	1,467	547	897
TOTAL PERSONNEL BENEFITS	68,673	62,062	41,043	37,021	6,611	27,630
MATERIALS & SUPPLIES						
Office Supplies	5,500	4,000	4,567	5,371	1,500	933
Operational Supplies	300		0		300	300
TOTAL MATERIALS & SUPPLIES	5,800	4,000	4,567	5,371	1,800	1,233
CONTRACTUALS						
Equipment Rental	600	500	762	572	100	-162
General Service & Maintenance	300	4,141			-3,841	300
Professional Services	8,000				8,000	8,000
TOTAL CONTRACTUALS	8,900	4,641	762	572	4,259	8,138
Furnishing & Equipment						
Communication Equipment	90		0		90	90
Office Equipment	1,670		688		1,670	982
TOTAL FURNISHING & EQUIPMENT	1,760	-	688	-	1,760	1,072
DEPARTMENT TOTAL	254,911	202,582	160,311	149,221	52,328	94,600
Employee Count						
Classified	7	4	4	3	3	3
Unclassified					0	0
Long Term Disability					0	0
Vacant		1			-1	0
New					0	0
Total Employee Count	7	5	4	3	2	3

FY-2012
APPROVED BUDGET

BUSINESS UNIT: 620		SECTION: HUMAN RESOURCES DIVISION				
OBJECT CLASSIFICATION/ITEM	FY-2012 Approved Budget	FY-2011 Approved Budget	FY-2011 Antcpd EOY	FY-2010 YTD Actuals 09/30/10	FY-12 Appr vs FY-11 Appr	FY-12 Appr vs FY-11 Antcpd
PERSONNEL SERVICES						
Management & Employee Salaries	255,624	242,383	227,797	216,650	13,241	27,827
Holiday Work	0		-		0	0
Sick Leave Used	0		2,207	1,251	0	-2,207
Annual Leave Taken	0		14,417	14,108	0	-14,417
Sick Leave Taken	0		-	4,185	0	0
Comp Time Taken	0		-		0	0
Regular Salaries	255,624	242,383	244,420	236,194	13,241	11,204
Night Differential/Hazard Pay			-		0	0
Overtime			-		0	0
TOTAL PERSONNEL SERVICES	255,624	242,383	244,420	236,194	13,241	11,204
PERSONNEL BENEFITS						
Retirement (27.46%)	70,194	66,558	67,016	59,566	3,636	3,178
Death & Disability	1,484	1,435	1,438	1,304	48	46
Hospital Insurance	5,049	8,060	6,022	4,933	-3,012	-973
Life Insurance	870	870	854	872	0	16
Dental Insurance	678	568	580	558	110	98
Medicare	3,707	3,515	3,693	3,313	192	13
TOTAL PERSONNEL BENEFITS	81,981	81,006	79,603	70,546	975	2,378
MATERIALS & SUPPLIES						
Office Supplies	1,000	1,000	967	1,004	0	33
Operational Supplies	0		0	1,060	0	0
TOTAL MATERIALS & SUPPLIES	1,000	1,000	967	2,064	0	33
TRAINING & TRAVEL						
Training	75,000	98,368	15,302	44,028	-23,368	59,698
Travel	110,000	79,000	109,267	110,314	31,000	733
TOTAL TRAINING & TRAVEL	185,000	177,368	124,569	154,342	7,632	60,431
CONTRACTUALS						
Medical Exams	0			7,620	0	0
Printing Services	500	500	0	4,215	0	500
TOTAL CONTRACTUALS	500	500	-	11,835	0	500
Furnishing & Equipment						
Office Equipment	1,650	1,500	-		150	1,650
TOTAL FURNISHING & EQUIPMENT	1,650	1,500	0	0	150	1,650
Miscellaneous						
Incentive Awards	0				0	0
Dues & Subscriptions	0	200	-		-200	0
Miscellaneous (Detail Appt)	20,000		-	-	20,000	20,000
TOTAL MISCELLANEOUS	20,000	200	0	0	19,800	20,000
DEPARTMENT TOTAL	545,755	503,957	449,558	474,981	41,798	96,197
Employee Count						
Classified	5	5	5	5	0	0
Unclassified					0	0
Long Term Disability					0	0
Vacant Classified					0	0
New Vacant					0	0
Total Employee Count	5	5	5	5	0	0

**FY-2012
APPROVED BUDGET**

BUSINESS UNIT: 630-632		SECTION: PROCUREMENT/SUPPLY DIVISION				
OBJECT CLASSIFICATION/ITEM	FY-2012 Approved Budget	FY-2011 Approved Budget	FY-2011 Antcpd EOY	FY-2010 YTD Actuals 09/30/10	FY-12 Appr vs FY-11 Appr	FY-12 Appr vs FY-11 Antcpd
PERSONNEL SERVICES						
Management & Employee Salaries	445,574	433,953	261,871	246,053	11,622	183,703
Holiday Work	0		-		0	0
Sick Leave Used	0		10,004	6,923	0	-10,004
Annual Leave Taken	0		21,256	30,422	0	-21,256
Sick Leave Taken	0		-	1,091	0	0
Comp Time Taken	0		-		0	0
Typhoon Salaries	0		0	7	0	0
Regular Salaries	445,574	433,953	293,131	284,496	11,622	152,444
Night Differential/Hazard Pay	0		-		0	0
Overtime	0		-		0	0
TOTAL PERSONNEL SERVICES	445,574	433,953	293,131	284,496	11,622	152,444
PERSONNEL BENEFITS						
Retirement (27.46%)	122,270	116,518	79,903	72,857	5,752	42,367
Death & Disability	3,956	3,827	2,664	2,287	129	1,292
Hospital Insurance	26,717	37,168	22,739	14,538	-10,452	3,977
Life Insurance	1,913	1,913	1,281	10,359	0	633
Dental Insurance	2,027	1,776	1,528	1,162	251	498
Medicare	5,375	6,148	4,202	3,959	-774	1,173
TOTAL PERSONNEL BENEFITS	162,258	167,351	112,317	105,162	-5,093	49,941
MATERIALS & SUPPLIES						
Office Supplies	2,600	2,900	1,285	1,575	-300	1,315
TOTAL MATERIALS & SUPPLIES	2,600	2,900	1,285	1,575	-300	1,315
CONTRACTUALS						
Advertising	5,000	16,000	4,398	9,060	-11,000	602
Equipment Rental	48,000	48,000	44,066	48,516	0	3,934
General Service & Maintenance	0	200			-200	0
Printing Services	500	500			0	500
TOTAL CONTRACTUALS	53,500	64,700	48,464	57,576	-11,200	5,036
Furnishing & Equipment						
Office Equipment	1,900	3,500	-	52	-1,600	1,900
TOTAL FURNISHING & EQUIPMENT	1,900	3,500	0	52	-1,600	1,900
Miscellaneous						
Drinking Water	15,000	15,000	15,625	14,679	0	-625
Advertising-Bids	0		480		0	-480
TOTAL MISCELLANEOUS	15,000	15,000	16,105	14,679	0	-1,105
DEPARTMENT TOTAL	680,832	687,404	471,302	463,540	-6,572	209,530
Employee Count						
Classified	11	8	7	8	3	4
Unclassified					0	0
Long Term Disability					0	0
Vacant			2	1	0	-2
New		3			-3	0
Total Employee Count	11	11	9	9	0	2

**FY-2012
APPROVED BUDGET**

BUSINESS UNIT: 640		SECTION: ENGINEERING/CIP DIVISION				
OBJECT CLASSIFICATION/ITEM	FY-2012 Approved Budget	FY-2011 Approved Budget	FY-2011 Antcpd EOY	FY-2010 YTD Actuals 09/30/10	FY-12 Appr vs FY-11 Appr	FY-12 Appr vs FY-11 Antcpd
PERSONNEL SERVICES						
Management & Employee Salaries	220,288	273,506	184,577	201,246	-53,218	35,711
Holiday Work	0		-		0	0
Sick Leave Used	0		282	1,108	0	-282
Annual Leave Taken	0		6,640	8,928	0	-6,640
Sick Leave Taken	0		-		0	0
Comp Time Taken	0		-		0	0
Regular Salaries	220,288	273,506	191,499	211,282	-53,218	28,789
Night Differential/Hazard Pay	0		-		0	0
Overtime	0		-		0	0
TOTAL PERSONNEL SERVICES	220,288	273,506	191,499	211,282	-53,218	28,789
PERSONNEL BENEFITS						
Retirement (27.46%)	60,491	75,105	52,506	53,685	-14,614	7,985
Death & Disability	0	1,435	0	399	-1,435	0
Hospital Insurance	10,601	21,604	11,587	7,438	-11,003	-986
Life Insurance	522	1,044	512	794	-522	10
Dental Insurance	600	1,233	599	562	-633	1
Medicare	3,194	3,966	2,707	2,986	-772	487
TOTAL PERSONNEL BENEFITS	75,408	104,386	67,911	65,864	-28,978	7,497
MATERIALS & SUPPLIES						
Office Supplies	900	550	0	388	350	900
Operational Supplies	95	0			95	95
TOTAL MATERIALS & SUPPLIES	995	550	-	388	445	995
CONTRACTUALS						
Blue Print Services	0	500	176	90	-500	-176
TOTAL CONTRACTUALS	0	500	176	90	-500	-176
Furnishing & Equipment						
Communication Equipment	0		-		0	0
Office Equipment	700	800	649	109	-100	51
TOTAL FURNISHING & EQUIPMENT	700	800	649	109	-100	51
Miscellaneous						
Dues & Subscriptions	200	0	0		200	200
TOTAL MISCELLANEOUS	200	0	-	-	200	200
DEPARTMENT TOTAL	297,591	379,742	260,235	277,733	-82,152	37,356
Employee Count						
Classified	3	3	3	3	0	0
Unclassified					0	0
Long Term Disability			1	1	0	-1
New	1	2			-1	1
Total Employee Count	4	5	4	4	-1	0

**FY-2012
APPROVED BUDGET**

BUSINESS UNIT: 650-655	SECTION: COMMERCIAL DIVISION					
OBJECT CLASSIFICATION/ITEM	FY-2012 Approved Budget	FY-2011 Approved Budget	FY-2011 Antcpd EOY	FY-2010 YTD Actuals 09/30/10	FY-12 Appr vs FY-11 Appr	FY-12 Appr vs FY-11 Antcpd
PERSONNEL SERVICES						
Management & Employee Salaries	303,345	301,165	274,821	244,292	2,180	28,524
Holiday Work	0		-		0	0
Sick Leave Used	0		10,762	9,875	0	-10,762
Annual Leave Taken	0		6,570	9,030	0	-6,570
Sick Leave Taken	0		-	3,819	0	0
Comp Time Taken	0		-		0	0
Regular Salaries	303,345	301,165	292,153	267,016	2,180	11,192
Night Differential/Hazard Pay	0		-		0	0
Overtime	0		-		0	0
TOTAL PERSONNEL SERVICES	303,345	301,165	292,153	267,016	2,180	11,192
PERSONNEL BENEFITS						
Retirement (27.46%)	83,298	82,700	80,099	67,428	599	3,200
Death & Disability	2,967	3,349	3,235	2,640	-382	-268
Hospital Insurance	8,121	18,108	10,901	11,012	-9,987	-2,780
Life Insurance	1,044	1,218	1,155	1,069	-174	-111
Dental Insurance	670	1,190	770	1,153	-520	-100
Medicare	3,738	3,898	3,996	3,613	-160	-258
TOTAL PERSONNEL BENEFITS	99,838	110,463	100,155	86,915	-10,625	-317
MATERIALS & SUPPLIES						
Office Supplies	2,500	2,200	1,818	1,707	300	682
Operational Supplies	622	2,000	128		-1,378	494
TOTAL MATERIALS & SUPPLIES	3,122	4,200	1,946	1,707	-1,078	1,176
CONTRACTUALS						
Appraisal Services	0	10,000	31,083	14,624	-10,000	-31,083
Equipment Rental	8,000	4,400	-		3,600	8,000
General Service & Maintenance	70,000	18,200	3,596		51,800	66,404
Professional Services	70,000	14,000	0	110	56,000	70,000
TOTAL CONTRACTUALS	148,000	46,600	34,679	14,734	101,400	113,321
Furnishing & Equipment						
Communication Equipment	0	133	-		-133	0
Office Equipment	500	1,200	-		-700	500
Power & Hand Tools	350	0	-		350	350
TOTAL FURNISHING & EQUIPMENT	850	1,333	0	-	-350	850
DEPARTMENT TOTAL	555,155	463,760	428,934	370,372	91,527	126,221
Employee Count						
Classified	6	7	6	6	-1	0
Unclassified					0	0
Long Term Disability					0	0
Vacant					0	0
New					0	0
Total Employee Count	6	7	6	6	-1	0

**FY-2012
APPROVED BUDGET**

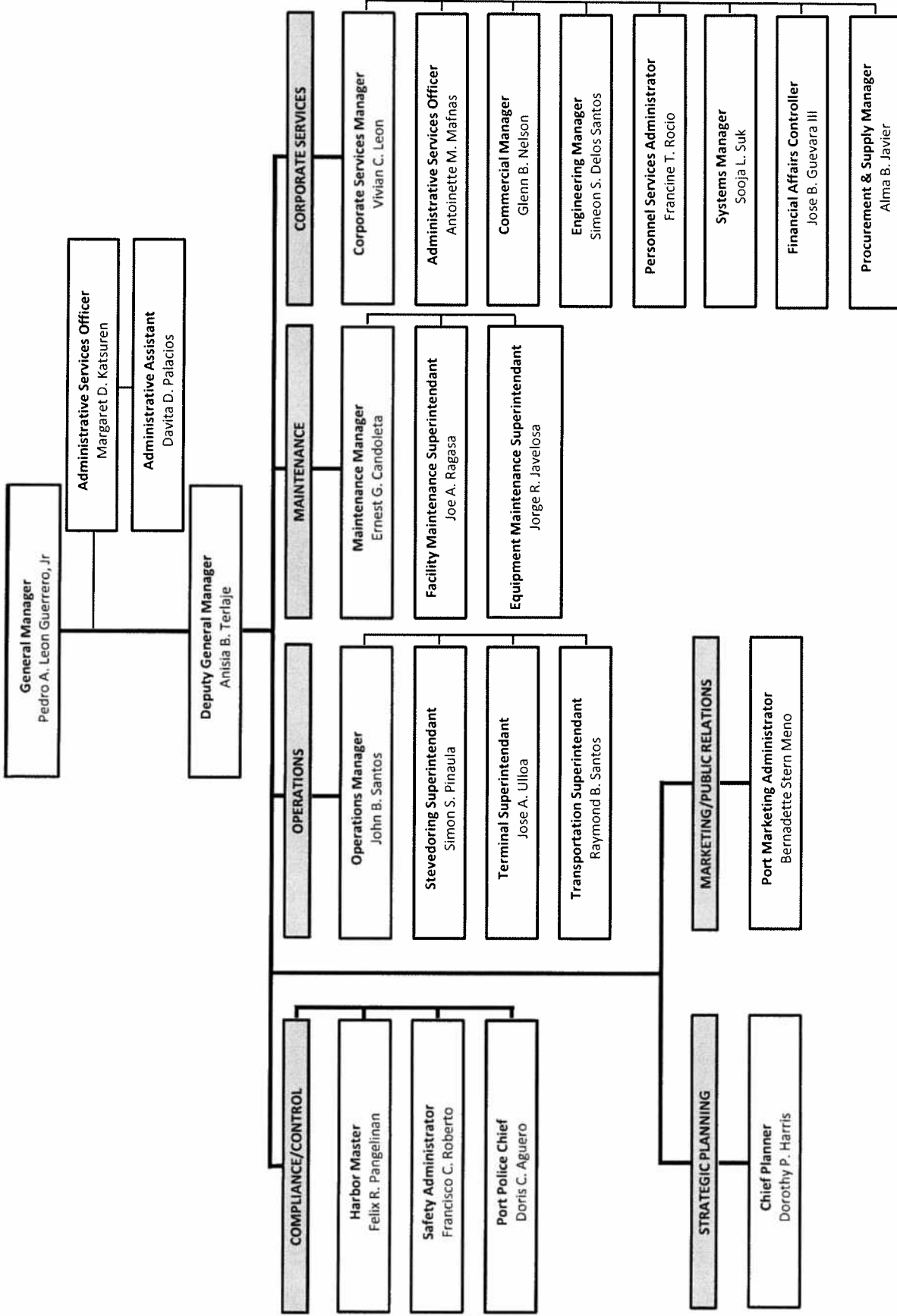
BUSINESS UNIT: 670	SECTION: INFORMATION TECHNOLOGY DIVISION					
OBJECT CLASSIFICATION/ITEM	FY-2012 Approved Budget	FY-2011 Approved Budget	FY-2011 Antcpd EOY	FY-2010 YTD Actuals 09/30/10	FY-12 Appr vs FY-11 Appr	FY-12 Appr vs FY-11 Antcpd
PERSONNEL SERVICES						
Management & Employee Salaries	330,180	352,598	289,592	226,281	-22,418	40,588
Holiday Work	0		-		0	0
Sick Leave Used	0		4,157	12,989	0	-4,157
Annual Leave Taken	0		22,233	25,348	0	-22,233
Sick Leave Taken	0		-	550	0	0
Comp Time Taken	0		-		0	0
Regular Salaries	330,180	352,598	315,983	265,168	-22,418	14,198
Night Differential/Hazard Pay	0		-		0	0
Overtime	0		-		0	0
TOTAL PERSONNEL SERVICES	330,180	352,598	315,983	265,168	-22,418	14,198
PERSONNEL BENEFITS						
Retirement (27.46%)	90,668	96,823	86,090	66,293	-6,156	4,577
Death & Disability	1,484	1,794	1,422	960	-310	61
Hospital Insurance	11,717	19,871	16,809	8,930	-8,153	-5,091
Life Insurance	1,044	1,174	885	1,026	-130	158
Dental Insurance	673	1,055	808	559	-383	-136
Medicare	3,650	4,030	3,286	2,660	-380	364
TOTAL PERSONNEL BENEFITS	109,235	124,748	109,301	80,428	-15,513	-66
MATERIALS & SUPPLIES						
Office Supplies	3,500	3,540	255	599	-40	3,245
Operational Supplies	10,000	14,000	6,988	8,817	-4,000	3,012
TOTAL MATERIALS & SUPPLIES	13,500	17,540	7,243	9,416	-4,040	6,257
CONTRACTUALS						
Computer Maintenance	161,720	157,826	93,373	101,418	3,894	68,347
General Service & Maintenance	6,500	7,500	0		-1,000	6,500
Professional Services	0	101,200	-		-101,200	0
TOTAL CONTRACTUALS	168,220	266,526	93,373	101,418	-98,306	74,847
Furnishing & Equipment						
Office Equipment	1,150	1,580	719	2,914	-430	431
Computer Equipment	79,350	125,500		2,949	-46,150	79,350
TOTAL FURNISHING & EQUIPMENT	80,500	127,080	719	5,863	-430	431
DEPARTMENT TOTAL	701,635	888,492	526,618	462,293	-140,707	95,666
Employee Count						
Classified	6	5	5	5	1	1
Unclassified					0	0
Long Term Disability			1	1	0	-1
Vacant	4	1			3	4
New		4			-4	0
Total Employee Count	10	10	6	6	0	4

**FY-2012
APPROVED BUDGET**

BUSINESS UNIT: 675-685, 140		SECTION: FINANCE DIVISION				
OBJECT CLASSIFICATION/ITEM	FY-2012 Approved Budget	FY-2011 Approved Budget	FY-2011 Antcpd EOY	FY-2010 YTD Actuals 09/30/10	FY-12 Appr vs FY-11 Appr	FY-12 Appr vs FY-11 Antcpd
PERSONNEL SERVICES						
Management & Employee Salaries	855,279	809,803	714,127	600,203	45,475	141,152
Holiday Work	392		392	283	392	0
Sick Leave Used	0		27,623	12,975	0	-27,623
Annual Leave Taken	0		50,031	41,755	0	-50,031
Sick Leave Taken	0		-	15,856	0	0
Comp Time Taken	0		489	300	0	-489
Regular Salaries	855,671	809,803	792,661	671,372	45,868	63,010
Night Differential/Hazard Pay	0	126	0	91	-126	0
Overtime	0		-		0	0
TOTAL PERSONNEL SERVICES	855,671	809,929	792,661	671,463	45,741	63,010
PERSONNEL BENEFITS						
Retirement (27.46%)	234,804	222,372	213,929	165,961	12,432	20,875
Death & Disability	9,396	7,654	6,710	5,262	1,741	2,686
Hospital Insurance	38,932	61,430	47,784	22,950	-22,498	-8,852
Life Insurance	3,827	3,653	3,212	2,785	174	615
Dental Insurance	3,953	3,569	3,427	2,526	384	526
Medicare	12,402	11,742	10,631	8,824	659	1,770
TOTAL PERSONNEL BENEFITS	303,313	310,420	285,692	208,308	-7,107	17,621
MATERIALS & SUPPLIES						
Office Supplies	9,000	8,700	6,740	8,344	300	2,260
TOTAL MATERIALS & SUPPLIES	9,000	8,700	6,740	8,344	300	2,260
CONTRACTUALS						
Communication Maintenance	107,188	63,000	66,543	59,856	44,188	40,645
TOTAL CONTRACTUALS	107,188	63,000	66,543	59,856	44,188	40,645
Furnishing & Equipment						
Communication Equipment	2,000	2,000	35	5,676	0	1,965
Office Equipment	5,860	3,500	-	760	2,360	5,860
TOTAL FURNISHING & EQUIPMENT	7,860	5,500	35	6,436	2,360	7,825
Miscellaneous						
Dues & Subscriptions	1,500	1,500	233	169	0	1,267
TOTAL MISCELLANEOUS	1,500	1,500	233	169	0	1,267
DEPARTMENT TOTAL	1,284,532	1,199,049	1,151,905	954,576	85,482	132,627
Employee Count						
Classified	18	19	17	16	-1	1
Unclassified					0	0
Long Term Disability					0	0
Vacant	2		1	2	2	1
New		1			-1	0
Total Employee Count	20	20	18	18	0	2

PORT AUTHORITY OF GUAM
 Jose D. Leon Guerrero Commercial Port
 FY-2012

ORGANIZATIONAL CHART



Position Number	NAME	POSITION TITLE	FY-2011		Annual Income	Annual Income Estimated	RET-DB	RET-DC	RET-DDI	LIFE	MEDICARE	MEDICAL	DENTAL	TOTAL
			Hourly Rate	Annual Income										
GENERAL MANAGER'S OFFICE (101)														
1	LEON GUERRERO, PEDRO A. JR.	General Manager	R	5B	\$ 58.10	120,848.00	34,287.62	494.52	173.94	1,810.53	2,400.84	225.94	101,571.17	
1	TERLAJE, ANISIA B.	Deputy General Manager	Q	6C	\$ 53.56	111,414.00	31,150.28	494.52	173.94	1,644.86	2,400.84	225.94	51,580.20	
1	530 KATSUREN, MARGRET D.	Administrative Services Officer	K	6A	\$ 23.92	49,753.60	14,259.62	494.52	173.94	3,606.72	6,516.90	374.40	61,211.86	
1	2106 PALACIOS, DAVITA D.	Administrative Assistant	G	6B	\$ 14.31	29,756.00	8,417.07	494.52	173.94	444.46	2,400.84	225.94	40,182.10	
4					311,771.60	320,878.34	88,113.19	1,978.08	695.76	4,652.74	3,606.72	374.40	420,299.23	
HARBOR MASTER (121)														
1	PANGELINAN, FELIX R.	Harbor Master	N	6C	\$ 36.15	75,201.00	21,039.77		173.94	1,110.99	2,400.84	225.94	101,571.17	
1	302 CRUZ, SONIA L.	Administrative Assistant	G	10C	\$ 16.94	35,235.20	36,772.00	10,097.59	173.94	533.19	2,400.84	225.94	51,580.20	
1	311 FIELHOUSE, BEN D.	Marine Traffic Controller	I	7B	\$ 19.35	40,248.00	42,003.43	11,534.14	173.94	609.05	6,516.90	374.40	61,211.86	
1	313 CRUZ, PETER R.	Marine Traffic Controller	I	8C	\$ 20.33	42,293.00	43,090.87	11,832.75	173.94	624.82	2,400.84	225.94	56,216.91	
1	316 AGUON, HELEN	Marine Traffic Controller	I	8D	\$ 20.54	42,723.20	44,586.59	12,243.48	173.94	721.10	2,400.84	225.94	64,282.42	
1	317 PANGELINAN, VINCENT D.	Marine Traffic Controller	I	11C	\$ 22.91	49,731.20	49,731.20	13,656.19	173.94	721.10	2,400.84	225.94	64,282.42	
1	314 SABLAN, FRANK J.	Marine Traffic Controller	I	8D	\$ 20.54	42,716.00	44,579.07	12,241.41	173.94	721.10	2,400.84	225.94	64,282.42	
1	315 SANDERS, ANTHONY Q.	Marine Traffic Controller	I	8C	\$ 20.33	42,293.00	44,137.63	12,120.19	173.94	646.40	2,400.84	225.94	57,968.27	
1	YATAR, CHARLENE R.S.	Marine Traffic Controller	I	8D	\$ 20.54	42,723.20	44,586.59	12,243.48	173.94	646.40	2,400.84	225.94	60,277.29	
1	9110 YBARRA-REYES, JOVONNE V.	Administrative Aide	E	5D	\$ 10.79	22,445.00	23,019.94	6,321.27	173.94	333.79	1,682.98	225.94	32,252.38	
1	320 ROCIO, ANDRE F.	Administrative Aide	E	5D	\$ 10.79	22,445.00	23,019.94	6,321.27	173.94	333.79	1,682.98	225.94	32,252.38	
1	4227 QUINATA, JESSICA R.	Administrative Aide	E	4B	\$ 10.17	21,144.00	5,834.28	494.52	173.94	308.07	2,400.84	225.94	30,684.06	
1	301 VACANT	Assistant Harbor Master	M	4B		477,119.40	66,914.67	3,461.64	2,087.28	7,154.20	23,256.36	1,953.38	666,607.11	
13														
PORT POLICE DIVISION (122)														
1	AGUERO, DORIS C.	Port Police Chief	N	6D	\$ 36.52	75,953.00	21,766.37	494.52	173.94	1,149.35	3,780.14	223.34	106,863.38	
1	103 AGUON, FRANCES C.	Administrative Assistant	I	5B	\$ 17.47	37,169.60	38,790.77	10,651.94	173.94	562.47	2,400.84	225.94	53,300.42	
1	2102 BENAVENTE, MARIE C.	Administrative Assistant	G	14A	\$ 19.47	40,507.00	41,215.08	11,317.66	173.94	597.62	2,400.84	225.94	53,300.42	
1	937 CRUZ, PAUL A.	Program Coordinator II	I	7A	\$ 19.15	39,842.00	40,966.00	11,249.26	173.94	584.01	2,400.84	225.94	56,104.52	
1	710 LUJAN, FRANK V.	Program Coordinator II	I	7A	\$ 19.15	39,842.00	40,966.00	11,249.26	173.94	584.01	2,400.84	225.94	56,104.52	
1	410 AGUON, FRANKIE C.	Port Police Supervisor	K	10D	\$ 28.90	60,112.00	62,733.81	17,226.70	173.94	589.61	2,400.84	225.94	81,538.61	
1	413 CAMACHO JR., HIGIRIO N.	Port Police Supervisor	K	9B	\$ 27.23	56,630.00	59,099.94	16,228.84	173.94	856.95	3,780.14	223.34	80,657.67	
1	432 CASTRO, EDDIE N.	Port Police Supervisor	K	9B	\$ 27.23	56,630.00	59,099.94	16,228.84	173.94	856.95	3,780.14	223.34	80,657.67	
1	412 FLORES, JESSE B.	Port Police Supervisor	K	9B	\$ 27.23	56,630.00	59,099.94	16,228.84	173.94	856.95	3,780.14	223.34	80,657.67	
1	422 AGUON, JONATHAN L.	Port Police II	I	9D	\$ 18.97	39,448.00	40,287.57	16,554.97	173.94	874.17	3,780.14	223.34	81,694.13	
1	460 CABRERA, ANGELA M.	Port Police II	I	8C	\$ 18.78	39,057.00	40,168.54	11,304.88	173.94	874.17	3,780.14	223.34	81,694.13	
1	428 CARAYOAN, DANIEL B.	Port Police II	I	8C	\$ 18.78	39,057.00	40,168.54	11,304.88	173.94	874.17	3,780.14	223.34	81,694.13	
1	2203 GABRIEL, ALBERT A.	Port Police II	I	9D	\$ 21.37	44,451.00	46,389.75	12,738.62	173.94	672.65	2,400.84	225.94	55,248.56	
1	438 LADISTE, MICHAEL G.	Port Police II	I	8C	\$ 18.78	39,057.00	40,168.54	11,304.88	173.94	874.17	3,780.14	223.34	81,694.13	
1	433 PASQUIN, ROGER S.	Port Police II	I	8D	\$ 18.97	39,448.00	40,287.57	16,554.97	173.94	874.17	3,780.14	223.34	81,694.13	
1	9215 QUIJANO, JOY R.	Port Police II	I	7C	\$ 19.54	40,248.00	42,003.43	11,534.14	173.94	596.94	2,400.84	225.94	56,724.00	
1	421 AGUON, BENNY M.	Port Police II	I	8C	\$ 18.78	39,057.00	40,168.54	11,304.88	173.94	874.17	3,780.14	223.34	81,694.13	
1	426 REYES, THERESA R.	Port Police II	I	8C	\$ 18.78	39,057.00	40,168.54	11,304.88	173.94	874.17	3,780.14	223.34	81,694.13	
1	452 SALAS, ERIC J.	Port Police II	I	5D	\$ 18.23	37,918.40	39,572.23	10,866.53	173.94	591.03	2,400.84	225.94	55,839.58	
1	454 SAN NICOLAS, FRANK J.	Port Police II	I	7B	\$ 19.35	40,241.00	41,996.13	11,532.14	173.94	608.94	2,400.84	225.94	56,684.50	
1	429 SANCHEZ, JERRY D.	Port Police II	I	8C	\$ 18.78	39,057.00	40,168.54	11,304.88	173.94	874.17	3,780.14	223.34	81,694.13	
1	424 TAITANO, MICHAEL A.	Port Police II	I	11C	\$ 22.91	49,731.20	49,731.20	13,656.19	173.94	672.65	2,400.84	223.34	63,978.44	
1	458 SANDIUN, JAMES A.	Port Police II	I	5A	\$ 17.69	36,794.00	37,902.07	10,407.91	173.94	549.58	2,400.84	225.94	56,419.31	
1	439 QUIJANO, JONATHAN J.	Port Police II	I	7B	\$ 17.69	36,794.00	37,902.07	10,407.91	173.94	549.58	2,400.84	225.94	56,419.31	
1	455 LAITAN, RONALD E.	Security Guard (Armed)	E	7A	\$ 17.05	35,473.00	36,805.28	10,106.73	173.94	542.47	2,400.84	225.94	51,522.68	
1	464 AKIMA, RODNEY F.	Security Guard (Armed)	E	7D	\$ 17.05	35,473.00	36,805.28	10,106.73	173.94	542.47	2,400.84	225.94	51,522.68	
1	442 DUENAS, GERARD M.	Security Guard (Armed)	E	7D	\$ 17.05	35,473.00	36,805.28	10,106.73	173.94	542.47	2,400.84	225.94	51,522.68	
1	435 DUENAS, KEESHA ANN F.	Security Guard (Armed)	E	11A	\$ 13.30	27,661.00	28,867.45	7,927.00	173.94	367.79	6,516.90	374.40	40,257.87	
1	443 FRANQUEZ, MICHAEL A.P.	Security Guard (Armed)	E	7C	\$ 11.57	24,064.00	25,113.56	6,896.18	173.94	418.58	2,400.84	225.94	37,881.48	
1	456 TERLAJE, BRANDON C.	Security Guard (Armed)	E	7B	\$ 11.45	23,816.00	24,854.74	6,825.11	173.94	360.39	2,400.84	225.94	32,708.71	
1	402 RABAGO, ROSE N.	Clerk III (LTD)	E	7C	\$ 11.57	24,064.00	25,113.56	6,896.18	173.94	364.15	2,400.84	225.94	35,669.13	
1	411 TAMANGLO, JESSE C.	Port Police Supervisor (LTD)	G	4A	0.00									
1	436 VACANT	Port Police I	I	3C										
1	420 VACANT	Port Police II	I	4A										
1	465 VACANT	Port Police III	L	5C										
		NEW-in house												
		Assistant Port Police Chief												
		Port Police III												
35					1,228,153.80	1,277,432.04	269,671.98	11,868.48	5,218.20	15,230.92	76,219.96	5,546.32	1,744,298.75	
SAFETY DIVISION (123)														
1	350 ROBERTO, FRANCISCO C.	Safety Administrator	L	6C	\$ 27.82	57,865.60	16,582.94	494.52	173.94	875.65	2,400.84	225.94	78,516.47	
1	564 SANTOS, FRANK B.	Program Coordinator II	G	16D	\$ 21.73	45,198.40	47,169.75	12,952.81	173.94	693.96	2,400.84	225.94	63,381.30	
1	1602 VERGARA-TAYLOR, LEONORE I.	Planner Work Coordinator	I	4A	\$ 17.00	35,358.00	36,900.15	10,132.78	173.94	535.05	2,400.84	225.94	46,230.45	

FY-2012
APPROVED STAFFING PATTERN

Position Number	NAME	POSITION TITLE	FY-2011		Annual Income	Annual Income Estimated	RET-DB	RET-DC	RET-DDI	LIFE	MEDICARE	MEDICAL	DENTAL	TOTAL
			Pay Grad	Hourly Rate										
1	BLAS, ROOUE C	Safety Inspector II	G 7D	\$ 15.19	31,595.20	32,973.24		9,054.45	494.52	173.94	478.11	4,808.18	277.16	48,259.80
1	SALAS, PAUL R	Safety Inspector II	G 16C	\$ 21.51	44,740.80	46,692.19	12,821.67		494.52	173.94	677.04	6,516.90	374.40	67,256.14
1	QUIDRACHAY, VICTOR Q	Safety Inspector II	G 5D	\$ 14.02	29,169.00	30,123.16		8,009.81	494.52	173.94	436.79	1,692.98	225.94	41,147.14
6	NEW-In House	Safety Inspector III	J 2C	\$ 5.00	10,400.00	10,400.00		2,855.84	494.52	173.94	150.80	1,692.98	225.94	15,964.02
					254,327.00	264,647.92	25,774.49	46,635.52	2,472.50	1,217.58	3,837.39	17,091.88	1,103.44	362,781.11
PLANNING DIVISION (145)														
1	HARRIS, DOROTHY P	Chief Planner	N 7C	\$ 37.62	78,249.60	81,662.49	22,424.52		494.52	173.94	922.88	1,692.98	225.94	104,260.95
1	PEREZ, DORA J C	Planner IV	L 8C	\$ 30.13	62,660.00	63,646.90		17,477.44	494.52	173.94	922.88	1,692.98	225.94	86,875.42
1	PAULINO, HERMAN T	Planner IV	L 8C	\$ 30.13	62,660.00	63,646.90		17,477.44	494.52	173.94	922.88	1,692.98	225.94	86,875.42
1	JAVELLANA, III JOSE G	Planner III	K 19A	\$ 29.83	62,039.00	63,671.10		17,484.08	494.52	173.94	923.23	1,692.98	225.94	82,746.88
1	LIZAMA-ACOSTA, DONNA A	Planner III	K 19B	\$ 29.83	56,638.40	59,108.71		16,231.25	494.52	173.94	857.08	1,692.98	225.94	73,556.79
1	ROJIC, EDERERICK	Planner II	J 15C	\$ 20.57	42,788.00	43,995.12		12,081.06	494.52	173.94	637.93	2,170.48	223.34	59,776.38
1	SUSUICO, ANTONIO S	Management/Program Analyst	L 9A	\$ 25.18	52,384.00	53,308.78		14,638.59	494.52	173.94	772.98	2,400.84	223.34	72,015.59
1	PANGELINAN, JOAQUIN P	Manager, Equip. Support Services	L 9A	\$ 30.73	63,918.40	66,706.23		18,317.53	494.52	173.94	967.24	2,170.48	223.34	89,053.28
1	MATANANE, RUDY	Program Coordinator IV	L 2C	\$ 23.73	49,349.00	49,690.65		13,645.05	478.40	173.94	720.51	2,170.48	223.34	67,102.37
9					530,686.40	547,182.90	22,424.52	127,631.91	3,940.04	1,565.46	6,750.05	17,112.16	1,496.30	728,303.33
MARKETING/PIO OFFICE (150)														
1	MENO, BERNADETTE S	Port Marketing Administrator	N 5A	\$ 34.06	70,844.80	73,934.72		20,302.47	494.52	173.94	6,516.90	374.40	101,796.96	
1	AGUIGUIL, JESSE F	Administrative Assistant	G 11B	\$ 17.46	36,316.80	37,900.77		10,407.55	494.52	173.94	549.56	1,692.98	223.34	51,209.32
1	JAVELOSA, JOSETTE J	Program Coordinator IV	L 6B	\$ 27.54	57,283.20	59,781.63	16,416.04		494.52	173.94	866.83	1,692.98	223.34	77,238.44
1	PEREZ, PERRY A	Program Coordinator II	I 2B	\$ 15.86	32,979.00	33,110.28		9,092.08	478.40	173.94	480.10	2,170.48	223.34	45,728.62
4					197,423.80	204,727.40	16,416.04	39,802.11	1,467.44	695.76	1,896.49	10,370.36	597.74	275,973.34
OPERATIONS DEPARTMENT (300)														
1	SANTOS, JOHN B	Operations Manager	O 9C	\$ 46.44	96,595.20	100,808.24	27,681.94		494.52	173.94	615.03	-	-	128,664.12
1	UNTALAN, JENNIE C	Administrative Officer	I 7C	\$ 19.54	40,643.20	42,415.87		11,647.40	494.52	173.94	522.81	6,516.90	374.40	55,346.76
1	QUINTANILLA, KENNETH J	Administrative Assistant	G 10A	\$ 16.61	34,548.80	36,055.66	9,900.88		494.52	173.94	807.35	1,692.98	223.34	53,544.59
1	BORJA, JUAN C	Planner III	I 7D	\$ 25.65	53,352.00	55,678.97		15,289.44	494.52	173.94	493.87	1,692.98	223.34	72,444.22
1	CASAPANG, RHRODA B	Planner Work Coordinator	I 2A	\$ 15.70	34,653.00	34,060.22		9,352.94	494.52	173.94	483.87	1,692.98	223.34	44,575.49
1	CRUZ, ASHLEY J	Clerk III	C 4B	\$ 7.82	16,270.00	16,858.54		4,629.35	494.52	173.94	244.45	2,400.84	223.34	25,027.58
6					274,062.20	285,877.49	37,582.83	40,919.13	1,976.08	1,043.64	2,683.50	8,917.74	600.34	379,602.75
STEVEDORE DIVISION (310)														
1	PIÑALLA, SIMON S	Stevedoring Superintendent	N 6A	\$ 35.44	73,720.00	76,935.33		21,126.44	494.52	173.94	1,115.56	2,578.68	277.16	102,701.63
1	CALVO, CORRINA H	Administrative Assistant	G 7C	\$ 15.04	32,647.60	33,633.63		8,965.04	494.52	173.94	473.39	2,170.48	223.34	45,148.34
1	REYES, CALLEN C	Planner Work Coordinator	I 5D	\$ 18.23	37,918.40	39,572.23		10,866.53	494.52	173.94	573.80	2,170.48	223.34	54,074.84
3					142,921.60	149,155.18		40,959.01	1,483.56	521.82	2,162.75	6,919.64	723.84	201,924.80
CARGO HANDLING (312)														
1	QUINTANILLA, JOSEPH C	Stevedore Supervisor II	J 8B	\$ 22.95	47,737.00	49,819.07	13,680.32		494.52	173.94	704.42	2,400.84	225.94	66,300.10
1	TOPASNA, JUNIOR D N	Stevedore Supervisor I	J 8A	\$ 22.72	47,264.00	48,581.03	13,340.35		494.52	173.94	633.53	2,400.84	225.94	62,789.75
1	ALVAREZ, PATRICK E	Stevedore Supervisor I	J 8C	\$ 20.57	42,788.00	43,691.49		11,997.68	494.52	173.94	630.52	2,400.84	225.94	63,982.45
1	BLAS, ANTHONY M	Stevedore Supervisor I	J 6D	\$ 21.62	44,971.00	46,932.43	12,887.64		494.52	173.94	680.52	4,808.18	374.40	65,759.87
1	BORJA, JOHN G	Stevedore Supervisor I	J 7D	\$ 22.50	46,797.00	48,638.07		13,410.93	494.52	173.94	687.31	2,400.84	225.94	65,544.24
1	TAJALLE, JOSEPH C	Stevedore Supervisor I	J 7A	\$ 21.84	45,420.00	47,401.01		13,016.32	494.52	173.94	687.31	2,400.84	225.94	61,773.10
1	ASANOMA, FRANCIS J	Stevedore Supervisor I	H 9A	\$ 17.48	36,368.00	37,954.20		10,422.22	494.52	173.94	550.34	2,400.84	225.94	52,222.00
1	DYDASCO, RICHARD A S	Stevedore Leader	H 10C	\$ 19.31	40,173.00	41,925.16	11,512.65		494.52	173.94	607.91	6,516.90	374.40	66,686.87
1	LEON, BENNY P	Stevedore Leader	H 16A	\$ 24.04	50,004.00	52,184.94	14,329.99		494.52	173.94	544.89	6,516.90	374.40	56,002.21
1	MEEKS, ROBERT L	Stevedore Leader	H 7B	\$ 16.97	35,008.00	37,578.50		9,822.28	494.52	173.94	518.66	6,516.90	374.40	48,778.83
1	RETUYAN, JOEY B	Stevedore Leader	H 12C	\$ 20.91	45,309.00	45,399.36	12,466.66		494.52	173.94	555.84	6,516.90	374.40	64,931.26
1	SANTOS, GILBERT G	Stevedore Leader	H 8B	\$ 17.66	36,732.00	38,334.08		10,526.54	494.52	173.94	555.84	2,170.48	223.34	50,084.92
1	TOPASNA, REED K S	Stevedore Leader	H 8B	\$ 17.66	36,732.00	38,334.08		10,526.54	494.52	173.94	555.84	2,170.48	223.34	52,478.74
1	AGUIGUIL, CHRISTOPHER J	Stevedore	F 8C	\$ 13.72	28,547.00	29,273.30		8,038.45	494.52	173.94	424.46	2,400.84	225.94	41,031.45
1	AGUON, JOSEPH J	Stevedore	F 10C	\$ 14.86	30,912.00	32,260.24		8,858.66	494.52	173.94	467.77	2,400.84	225.94	42,255.13
1	ATALUG, JOSEPH Q	Stevedore	F 10A	\$ 14.57	30,303.00	31,624.68		8,684.14	494.52	173.94	458.56	2,400.84	225.94	41,435.83
1	BALUYTA, SAMMY O	Stevedore	F 7B	\$ 13.06	27,161.00	27,170.40		7,460.99	494.52	173.94	463.14	1,692.98	225.94	35,689.83
1	CABUO, FRANKLIN J	Stevedore	F 10B	\$ 14.71	30,606.00	31,940.89		8,770.97	494.52	173.94	463.14	1,692.98	225.94	43,752.38
1	CEPEDA JR, FRANK V A	Stevedore	F 10B	\$ 14.71	30,606.00	31,940.89		8,770.97	494.52	173.94	463.14	1,692.98	225.94	41,843.46
1	DEZUR, BENNY G	Stevedore	F 10C	\$ 14.71	30,606.00	31,940.89		8,770.97	494.52	173.94	463.14	1,692.98	225.94	41,843.46
1	DEFENSOR, ROMY C	Stevedore	F 10B	\$ 14.71	30,606.00	31,940.89		8,770.97	494.52	173.94	463.14	1,692.98	225.94	43,752.38
1	DUKE, MATHIEU B	Stevedore	F 9D	\$ 14.42	30,003.00	31,311.59		8,598.16	494.52	173.94	454.02	2,400.84	225.94	44,244.30
1	FLORES, JESSE J	Stevedore	F 9B	\$ 14.15	29,422.00	30,705.25		8,431.66	494.52	173.94	445.23	4,808.18	223.34	45,282.12

FY-2012
APPROVED STAFFING PATTERN

Position Number	NAME	POSITION TITLE	FY-2011		Annual Income	Annual Income Estimated	RET-DB	RET-DC	RET-DDI	LIFE	MEDICARE	MEDICAL	DENTAL	TOTAL
			Hourly Rate	Grad Step										
1	SAN NICOLAS, WAYNE D.	Planner Work Coordinator	\$ 18.23	I 5D	37,909.00	38,562.42	11,307.63	10,863.84	494.52	173.94	573.66	1,682.98	225.94	53,577.29
1	TAITANO, EDDIE C.	Planner Work Coordinator	\$ 18.97	I 6D	39,457.60	41,178.56	11,307.63	9,345.18	494.52	173.94	587.09			53,257.22
1	FLORES, JANICE H.	Planner Work Coordinator	\$ 15.70	I 2A	32,653.00	34,031.96					493.46			44,365.12
1	VACANT	Cargo Checker Leader		H 4B										
1	VACANT	Cargo Checker	\$ 13.19	F 7C	27,435.20	27,435.20		7,633.71	494.52	173.94	397.81	1,682.98	225.94	37,944.10
1	VACANT	Cargo Checker	\$ 13.19	F 7C	27,435.20	27,435.20		7,633.71	494.52	173.94	397.81	1,682.98	225.94	37,944.10
1	VACANT	Cargo Checker	\$ 13.19	F 7C	27,435.20	27,435.20		7,633.71	494.52	173.94	397.81	1,682.98	225.94	37,944.10
40					1,309,674.40	1,355,823.02	85,351.08	286,957.92	15,330.12	6,609.72	19,127.18	86,406.06	6,878.30	1,862,483.41
		TRANSPORTATION(330)												
		Transportation Superintendent's Office												
1	SANTOS, RAYMOND B.	Transportation Superintendent	\$ 39.15	N 8C	81,452.00	84,983.69		23,336.52	494.52	173.94	1,232.26	3,780.14	223.34	114,224.41
1	CRUZ, JESUSA A.	Administrative Assistant	\$ 14.16	G 6A	29,461.00	29,670.05		8,147.40	494.52	173.94	430.22			38,916.13
1	DELORIE, ALEXANDER P.	Transportation Supervisor	\$ 28.61	I 10C	59,519.00	62,114.94	17,056.76	44,579.07	12,241.41	173.94	6,516.90	6,516.90	374.40	86,236.95
1	TAJEFON, MICHAEL U.	Transportation Supervisor	\$ 28.90	K 10D	60,114.00	62,735.90	17,227.28	44,579.07	12,241.41	173.94	909.67	6,516.90	374.40	87,938.08
1	BAMBA, JOSE P.	Crane Operator	\$ 21.41	J 6C	44,525.00	46,466.98	12,759.83	12,759.83	13,727.96	173.94	673.77			60,074.52
1	TENORIO, PETER S.N.	Crane Operator	\$ 22.28	J 7C	46,333.00	48,333.83	13,277.96	45,025.74	11,192.83	173.94	701.13	2,400.84	225.94	65,133.64
1	CRUZ, FRANKIE R.J.	Equipment Operator Leader	\$ 21.58	I 10A	44,895.00	46,853.11	12,865.86	40,760.49	11,192.83	173.94	679.37	2,400.84	225.94	63,199.07
1	MENO, JOAQUIN R.	Equipment Operator Leader	\$ 22.91	I 11C	47,657.00	49,735.58	13,657.39	40,760.49	11,192.83	173.94	609.05	2,170.48	223.34	56,714.38
1	SARMIENTO, JOHN Q.	Planner Work Coordinator	\$ 19.35	I 7B	40,248.00	42,003.43	11,534.14	31,483.92	989.04	1,565.46	5,235.47	23,786.10	1,647.36	636,004.09
9					454,184.00	472,917.51	98,379.23	31,483.92	989.04	1,565.46	5,235.47	23,786.10	1,647.36	636,004.09
		CRANE OPERATOR (331)												
1	BABAITA, GREGORIO L.	Crane Operator	\$ 18.97	I 6D	39,448.00	41,168.54	11,304.88	11,304.88	11,304.88	173.94	596.94	2,400.84	225.94	55,871.08
1	BALAJADA, DERRICK M.	Crane Operator	\$ 19.93	I 8A	41,460.00	43,288.29	11,881.47	44,579.07	12,241.41	173.94	627.39	2,578.68	277.16	58,808.94
1	BAZA, RICHARD T.	Crane Operator	\$ 20.54	I 8D	42,716.00	44,579.07	12,241.41	44,579.07	12,241.41	173.94	646.40	2,400.84	225.94	60,287.61
1	BORDALO III, ALFREDO T.	Crane Operator	\$ 19.15	I 7A	39,842.00	41,579.72	11,417.79	45,025.74	11,192.83	173.94	602.91	6,516.90	374.40	60,665.66
1	CLAROS, PATRICK Q.	Crane Operator	\$ 20.74	I 9A	43,144.00	45,025.74	11,417.79	45,025.74	11,192.83	173.94	602.91	6,516.90	374.40	60,620.06
1	CONCEPCION, ANTHONY M.	Crane Operator	\$ 18.78	I 6C	39,057.00	40,760.49	11,192.83	40,760.49	11,192.83	173.94	591.03	6,516.90	374.40	60,104.10
1	DIEGO, JESSE A.	Crane Operator	\$ 19.15	I 7A	39,842.00	41,579.72	11,417.79	40,760.49	11,192.83	173.94	602.91	6,516.90	374.40	60,965.66
1	FRANCSO, ANTHONY R.	Crane Operator	\$ 19.93	I 8B	41,460.00	43,288.29	11,881.47	41,579.72	11,417.79	173.94	608.94	6,516.90	374.40	62,842.40
1	LORENZO, PETER C.	Crane Operator	\$ 19.35	I 7B	40,248.00	42,003.43	11,534.14	41,579.72	11,417.79	173.94	608.94	6,516.90	374.40	62,842.40
1	MALAGA, EDWIN A.	Crane Operator	\$ 22.24	I 10D	46,256.00	48,273.47	13,235.90	46,389.75	12,738.62	173.94	699.97	6,516.90	374.40	64,311.15
1	NANGAUTA, JOSEPH J.	Crane Operator	\$ 21.37	I 9D	44,451.00	46,389.75	12,738.62	44,451.00	11,417.79	173.94	672.65	6,516.90	374.40	62,934.57
1	NAUTA, KENNETH C.	Crane Operator	\$ 19.15	I 7A	39,842.00	41,579.72	11,417.79	44,451.00	11,417.79	173.94	672.65	6,516.90	374.40	62,934.57
1	QUICHOCHO, PETER T.	Crane Operator	\$ 19.93	I 8A	41,460.00	43,288.29	11,881.47	44,451.00	11,417.79	173.94	672.65	6,516.90	374.40	62,934.57
1	TORRES, GERALD F.	Crane Operator	\$ 22.24	I 10D	46,256.00	48,273.47	13,235.90	44,451.00	11,417.79	173.94	672.65	6,516.90	374.40	62,934.57
1	SALAS, FRANCIS M.	Crane Operator	\$ 19.93	I 8A	41,460.00	43,288.29	11,881.47	44,451.00	11,417.79	173.94	672.65	6,516.90	374.40	62,934.57
1	TORRES, GERALD F.	Crane Operator	\$ 22.24	I 10D	46,256.00	48,273.47	13,235.90	44,451.00	11,417.79	173.94	672.65	6,516.90	374.40	62,934.57
1	TOVES, JUAN B.	Crane Operator	\$ 19.93	I 8A	41,460.00	43,288.29	11,881.47	44,451.00	11,417.79	173.94	672.65	6,516.90	374.40	62,934.57
1	TOVES, JUAN B.	Crane Operator	\$ 24.32	I 13A	50,589.00	52,795.46	14,497.63	44,451.00	11,417.79	173.94	602.91	6,516.90	374.40	74,356.33
1	TUDELA, ALBERT I.	Crane Operator	\$ 19.15	I 7A	39,842.00	41,579.72	11,417.79	44,451.00	11,417.79	173.94	646.40	4,506.18	277.16	57,772.84
1	YAMASTA, ANTHONY P.	Crane Operator	\$ 20.54	I 8D	42,716.00	44,579.07	11,417.79	44,579.07	11,417.79	173.94	646.40	4,506.18	277.16	57,772.84
18					760,082.00	793,233.27	158,724.28	59,097.58	2,472.60	3,130.92	10,036.38	64,952.34	4,302.22	1,095,950.19
		EQUIPMENT OPERATOR SECTION (332)												
1	CALIP, ALAN I.	Equipment Operator III	\$ 18.01	H 8D	37,470.00	39,104.27	11,980.34	10,289.26	494.52	173.94	567.01	2,578.68	277.16	50,629.00
1	CONCEPCION, PEDRO E.J.	Equipment Operator III	\$ 20.10	H 11C	41,805.00	43,628.34	11,980.34	10,845.50	494.52	173.94	632.61	2,578.68	277.16	59,271.07
1	CRUZ, TED R.	Equipment Operator III	\$ 18.19	H 9A	37,845.00	39,485.62	11,980.34	10,845.50	494.52	173.94	572.69	6,516.90	374.40	58,473.57
1	NEDEGQ, THEODORE T.	Equipment Operator III	\$ 18.19	H 9A	37,845.00	39,485.62	11,980.34	10,845.50	494.52	173.94	572.69	6,516.90	374.40	58,473.57
1	ROBERTO, JR., DAVID S.	Equipment Operator III	\$ 18.19	H 9A	37,845.00	39,485.62	11,980.34	10,845.50	494.52	173.94	572.69	6,516.90	374.40	58,473.57
1	SANCHEZ, KEVIN R.	Equipment Operator III	\$ 18.19	H 9A	37,845.00	39,485.62	11,980.34	10,845.50	494.52	173.94	572.69	6,516.90	374.40	58,473.57
1	TAYAMA, JOAQUIN L.G.	Equipment Operator III	\$ 18.19	H 9A	37,845.00	39,485.62	11,980.34	10,845.50	494.52	173.94	572.69	6,516.90	374.40	58,473.57
1	AGUIGU, JOSEPH F.	Equipment Operator II	\$ 15.04	G 7C	31,274.00	32,638.03	10,845.50	8,962.40	494.52	173.94	473.25	2,400.84	225.94	53,714.53
1	ATOIGUE, FREDERICK	Equipment Operator II	\$ 15.65	G 8C	32,543.00	33,962.38	11,555.57	9,326.07	494.52	173.94	444.01	1,682.98	225.94	42,051.19
1	BENAVENTE, IGNACIO A.	Equipment Operator II	\$ 14.31	G 6B	29,756.00	30,621.21	11,155.57	8,408.59	494.52	173.94	444.01	1,682.98	225.94	42,051.19
1	BLAS JR., ALBERT D.	Equipment Operator II	\$ 15.65	G 8C	32,543.00	33,962.38	11,555.57	9,326.07	494.52	173.94	444.01	1,682.98	225.94	42,051.19
1	GORJA, ROLY, NOEL A.	Equipment Operator II	\$ 15.65	G 8C	32,543.00	33,962.38	11,555.57	9,326.07	494.52	173.94	444.01	1,682.98	225.94	42,051.19
1	CASTANEDA, PEDRO S.	Equipment Operator II	\$ 15.34	G 8A	31,902.00	33,293.42	11,044.96	9,326.07	494.52	173.94	444.01	1,682.98	225.94	42,051.19
1	CRUZ, GERALD J.	Equipment Operator II	\$ 15.19	G 7D	31,586.00	32,963.64	10,845.50	9,051.81	494.52	173.94	444.01	1,682.98	225.94	42,051.19
1	CRUZ, KEVIN LEE T.	Equipment Operator II	\$ 14.31	G 6B	29,756.00	30,621.21	11,155.57	8,408.59	494.52	173.94	444.01	1,682.98	225.94	42,051.19
1	DELA PENA, EDWIN C.	Equipment Operator II	\$ 13.61	G 5A	28,312.00	29,316.90	10,449.36	7,775.82	494.52	173.94	442.81	6,516.90	374.40	50,053.18
1	EVANGELISTA, ANTHONY J.	Equipment Operator II	\$ 15.34	G 8A	31,902.00	33,293.42	11,044.96	9,142.37	494.52	173.94	442.81	6,516.90	374.40	50,053.18
1	FERNANDO, ARNOLD P.	Equipment Operator II	\$ 18.53	G 12D	38,541.00	40,221.98	11,044.96	9,142.37	494.52	173.94	442.81	6,516.90	374.40	50,053.18
1	GARRIDO, RICK E.	Equipment Operator II	\$ 15.80	G 8D	32,869.00	34,302.59	11,555.57	9,419.49	494.52	173.94	442.81	6,516.90	374.40	50,053.18
1	LAGUANA, PEREK R.	Equipment Operator II	\$ 18.71	G 13A	38,927.00	40,624.82	11,555.57	9,419.49	494.52	173.94	442.81	6,516.90	374.40	50,053.18
1	MASGA, GEORGE S.	Equipment Operator II	\$ 15.34	G 8A	31,902.00	33,293.42	11,044.96	9,142.37	494.52	173.94	442.81	6,516.90	374.40	50,053.18
1	MESA, ANTONIO R.	Equipment Operator II	\$ 15.49	G 8C	32,219.20	33,624.45	11,044.96	9,233.27	494.52	173.94	442.81	6,516.90	374.40	50,053.18
1	MESA, ANTONIO R.	Equipment Operator II	\$ 15.65	G 8C	32,543.00	33								

FY-2012
APPROVED STAFFING PATTERN

Position Number	NAME	POSITION TITLE	FY-2011		Annual Income	Annual Income Estimated	RET-DB	RET-DC	RET-DDI	LIFE	MEDICARE	MEDICAL	DENTAL	TOTAL
			Pay Grad	Hourly Rate										
1	6342	SABLAN, JR RONNIE D	G 6B	\$ 14.31	29,756.00	30,621.21	9,704.92	8,408.59	494.52	173.94	444.01	-	-	40,142.27
1	5327	SANTOS, ALBERT E.	G 9C	\$ 16.28	33,865.00	35,342.04	9,704.92	8,408.59	494.52	173.94	512.46	3,606.72	374.40	49,714.46
1	6327	SUSUICO, JOSEPH F.	G 8A	\$ 15.34	31,902.00	33,283.42		8,142.37	494.52	173.94	482.75	-	-	43,597.01
1	6380	TEDPAHO, BENJAMIN RAY M.	G 7C	\$ 15.04	31,283.20	32,647.63		8,965.04	494.52	173.94	3,606.72	3,780.14	223.34	48,891.41
1	6337	TEIXEIRA, DAVID G.	G 8D	\$ 15.80	32,869.00	34,302.59		9,419.49	494.52	173.94	497.39	-	-	44,461.47
1	6367	UNTALAN ANTONIO O.	G 8C	\$ 15.65	32,552.00	33,971.77		9,328.65	494.52	173.94	492.59	-	-	44,461.47
1	6369	YOSHIDA, KEN A.	G 8C	\$ 15.65	32,552.00	33,971.77		9,328.65	494.52	173.94	492.59	-	-	44,461.47
1	6369	ZAMORA, DANNY J.	G 8D	\$ 15.80	32,869.00	34,302.59		9,419.49	494.52	173.94	497.39	-	-	44,887.93
1	6402	OGOMAI, C.	G 5A	\$ 13.61	28,312.00	29,206.73		8,020.72	494.52	173.94	2,400.84	2,400.84	225.94	40,948.21
1	6402	DRILON, WAYNE K.	G 5A	\$ 13.61	28,312.00	29,206.73		8,020.72	494.52	173.94	2,400.84	2,400.84	225.94	40,948.21
1	6402	QUIDACHAY, PATRICK J.	G 5A	\$ 13.61	28,312.00	29,206.73		8,020.72	494.52	173.94	2,400.84	2,400.84	225.94	40,948.21
1	6326	REYES, HENRY N.	G 5A	\$ 13.61	28,312.00	29,206.73		8,020.72	494.52	173.94	2,400.84	2,400.84	225.94	40,948.21
1	6341	VACANT	G 5A	\$ 13.61	28,312.00	29,206.73		8,020.72	494.52	173.94	2,400.84	2,400.84	225.94	40,948.21
1	6377	VACANT	G 5A	\$ 13.61	28,312.00	29,206.73		8,020.72	494.52	173.94	2,400.84	2,400.84	225.94	40,948.21
1	NEW	NEW	G 5A											
1	NEW	NEW	G 5A											
1	NEW	NEW	G 5A											
1	NEW	NEW	G 5A											
44					1,277,104.60	1,325,044.39	65,576.79	297,831.63	16,319.16	6,783.66	18,730.39	85,071.22	6,803.42	1,822,160.66
		DISPATCHER'S SECTION (333)												
1	6111	BLAS, EUGENE F.S.	E 8B	\$ 11.92	24,793.60	25,874.98		7,105.27	494.52	173.94	375.19	2,400.84	225.94	36,850.68
1	6112	PECINA, JR, JORGE D.	E 10B	\$ 21.30	44,302.00	46,234.25	12,695.92	7,753.46	494.52	173.94	670.40	6,516.90	374.40	66,665.81
1	6345	LEON GUERRERO, JOSEPH F.	E 10D	\$ 13.17	27,387.00	28,235.47		7,753.46	494.52	173.94	409.41	-	-	37,066.80
3					96,482.60	100,344.70	12,695.92	14,858.73	989.04	521.82	1,455.00	8,917.74	600.34	140,383.29
		MAINTENANCE DIVISION												
		Maintenance Manager's Office (400)												
1	7000	CANDOLETA, ERNEST G.	O 9A	\$ 45.53	94,702.40	99,832.88	27,139.51	19,800.62	989.04	695.76	1,561.69	10,264.80	901.16	277,662.90
1	7003	BAGAFORO, EVELYN P.	I 3D	\$ 16.83	35,008.00	35,596.73	9,774.59	7,105.27	494.52	173.94	516.14	2,400.84	225.94	48,687.18
1	7004	TAIMANGLO, MARIA M	G 7C	\$ 15.04	31,274.00	31,501.34		8,650.27	494.52	173.94	456.77	1,682.98	225.94	43,185.75
1	8112	CRUZ, KATHERINE J.S.	G 13D	\$ 19.28	40,106.00	40,605.78		11,150.35	494.52	173.94	588.78	2,400.84	225.94	55,640.15
1	NEW	NEW	C 4C		201,090.40	206,535.73	36,914.10	19,800.62	989.04	695.76	1,561.69	10,264.80	901.16	277,662.90
4					79,830.40	83,312.23	22,877.54	22,877.54		173.94	1,208.03	-	-	107,571.74
1	7002	JAVELOSA, JORGE R.	N 8A	\$ 38.38	79,830.40	83,312.23	\$ 22,877.54			173.94	1,208.03	-	-	107,571.74
1		EQUIPMENT MAINTENANCE (410)												
		Equipment Maintenance Superintendent's Office												
1	9100	YAP, JULIO D.	K 11A	\$ 29.19	60,715.00	63,194.97	17,353.34	13,277.96	494.52	173.94	916.33	3,606.72	-	85,245.30
1	9103	GANON, HERNANDO F.	J 7C	\$ 22.28	46,333.00	48,353.83		13,277.96	494.52	173.94	701.13	2,400.84	-	65,402.22
1	9101	SONTILLANOSA, JULIETO A.	I 6C	\$ 18.78	39,057.00	40,199.42		11,035.76	494.52	173.94	582.89	4,809.18	-	57,297.71
1	9107	AROMIN, GUS ALAN D.	I 6C	\$ 18.78	39,057.00	40,199.42		11,035.76	494.52	173.94	582.89	4,809.18	-	57,297.71
1	9108	BELMES, FRANCISCO A.	I 7B	\$ 19.35	40,241.00	41,966.13		11,532.14	494.52	173.94	608.94	4,809.18	-	59,613.85
1	9111	HATTIG, HERBERT G.	I 6C	\$ 18.78	39,057.00	40,199.42		11,532.14	494.52	173.94	608.94	4,809.18	-	59,613.85
1	9113	JARDELEZA, RENATO G.	I 6A	\$ 18.41	38,288.00	39,957.95		10,972.45	494.52	173.94	591.03	6,516.90	374.40	59,609.58
1	9105	LAU, ROBERT D.	I 6A	\$ 18.41	38,288.00	39,957.95		10,972.45	494.52	173.94	591.03	6,516.90	374.40	59,609.58
1	9106	NIU, EFREN B.	I 6B	\$ 18.59	38,671.00	40,357.65		11,082.21	494.52	173.94	579.39	2,400.84	225.94	56,181.73
1	9112	REYES, RANDY S.N.	I 6B	\$ 18.59	38,671.00	40,357.65		11,082.21	494.52	173.94	579.39	2,400.84	225.94	56,181.73
1	9116	SEPULVA, BARTOLOME B.	I 5C	\$ 18.04	37,923.20	39,159.79		10,972.45	494.52	173.94	585.19	1,682.98	225.94	54,602.43
1	9104	TOPASMA, PETER L.G.	I 7B	\$ 19.35	40,241.00	41,966.13		10,972.45	494.52	173.94	585.19	2,400.84	225.94	55,320.29
1	9114	JESUS, JESSIP M.	I 7B	\$ 19.35	40,241.00	41,966.13		10,972.45	494.52	173.94	585.19	2,400.84	225.94	55,320.29
1	9117	RIVERA, MARK R.	D 2C	\$ 8.32	17,300.00	17,991.67		4,940.51	494.52	173.94	260.88	2,170.48	225.94	56,220.07
1	NEW	NEW	I 3A		549,516.60	571,699.31	\$ 51,050.76	105,937.87	4,945.20	2,435.16	8,289.64	40,342.90	1,950.78	786,551.61
14					549,516.60	571,699.31	\$ 51,050.76	105,937.87	4,945.20	2,435.16	8,289.64	40,342.90	1,950.78	786,551.61
		PREVENTIVE MAINTENANCE SECTION (412)												
1	9300	AFLAGUE, TERENCE R.	K 9A	\$ 26.96	56,076.80	58,522.61	16,070.31	12,633.45	494.52	173.94	667.10	1,682.98	225.94	76,675.78
1	9312	PIOLO, GEORGE E.	J 6B	\$ 21.19	44,084.00	46,006.74		12,633.45	494.52	173.94	667.10	1,682.98	225.94	63,979.23
1	9303	TORRES, ALFRED J.	J 6B	\$ 21.19	44,084.00	46,006.74		12,633.45	494.52	173.94	667.10	1,682.98	225.94	63,979.23
1	9316	AGUININGOC, ROGER S.	I 6A	\$ 18.41	38,292.80	39,962.96		10,973.83	494.52	173.94	579.46	2,400.84	225.94	52,184.71
1	9317	CHARFAUROS, LARRY T.	I 6A	\$ 18.41	38,292.80	39,962.96		10,973.83	494.52	173.94	579.46	2,400.84	225.94	52,184.71
1	9315	EITTELMAN, CURTIS R.	I 6C	\$ 18.78	39,062.40	40,766.12		11,194.38	494.52	173.94	591.11	2,400.84	225.94	55,949.83

FY-2012
APPROVED STAFFING PATTERN

Position Number	NAME	POSITION TITLE	FY-2011			FY-2012			RET-DB	RET-DC	RET-DDI	LIFE	MEDICARE	MEDICAL	DENTAL	TOTAL
			Pay Grad	Hourly Rate	Annual Income	Annual Income Estimated	Annual Income									
1	FERNANDEZ, FRANK M	Preventive Maint. Mechanic	I	6B	\$ 18.59	38,671.00	40,357.65	0.27	11,082.21	494.52	173.94	585.19	3,606.72	374.40	56,614.63	
1	FLORES, RICHARD P.	Preventive Maint. Mechanic	I	6C	\$ 18.78	39,062.40	40,766.12	0.27	11,194.38	494.52	173.94	591.11	1,682.98	-	54,903.05	
1	MAFNAS, JESUS C	Preventive Maint. Mechanic	I	6C	\$ 18.78	39,062.40	40,766.12	0.27	11,194.38	494.52	173.94	591.03	1,682.98	-	53,212.80	
1	FLORES, JERRY I	Preventive Maint. Mechanic	I	6C	\$ 18.78	39,062.40	40,766.12	0.27	11,194.38	494.52	173.94	591.11	1,682.98	-	53,220.07	
1	TOPASNA, DAVID G	Preventive Maint. Mechanic	I	5A	\$ 18.04	37,533.00	39,170.02	0.27	10,756.08	494.52	173.94	567.97	3,760.14	223.34	55,166.01	
1	CANDOLETA, JUSTIN A	Cargo Checker	F	6C	\$ 13.72	28,547.00	29,377.06	0.27	8,066.94	494.52	173.94	425.97	-	-	38,539.43	
12						481,825.60	502,425.58	\$ 28,703.76	\$ 109,262.30	4,945.20	2,087.28	6,436.59	25,851.54	1,873.30	681,585.56	
FLEET MAINTENANCE SECTION (413)																
1	MANIBUSAN, MARK J.	Heavy Equip. Mech. Supervisor	K	8D	\$ 26.69	55,515.20	57,936.52	15,909.37	12,633.45	494.52	173.94	505.30	2,578.68	-	74,019.82	
1	NAPUTI, ANTHONY Q.	Heavy Equip. Mechanic Leader	I	6B	\$ 21.19	44,084.00	46,066.74	13,817.01	11,304.88	494.52	173.94	596.94	6,516.90	374.40	61,887.33	
1	JARDELEZA, NESTOR G	Heavy Equipment Mechanic II	I	3A	\$ 16.34	33,978.00	34,848.36	10,973.83	9,589.36	494.52	173.94	443.01	3,780.14	-	45,591.48	
1	FLORES, JAVIER O JR.	Heavy Equipment Mechanic I	G	6A	\$ 14.16	29,461.00	30,552.19	9,982.96	8,389.63	494.52	173.94	591.11	1,682.98	-	42,223.77	
1	ADONAY, WILFREDO B.	Heavy Equipment Mechanic	I	6A	\$ 18.41	38,292.80	39,962.96	11,943.88	10,973.83	494.52	173.94	591.11	3,606.72	223.34	56,188.19	
1	FAASUAMALIE, IONATANA	Heavy Equipment Mechanic	I	6C	\$ 18.78	39,062.40	40,766.12	11,081.12	11,081.12	494.52	173.94	585.13	3,606.72	-	53,220.07	
1	FLORES, ROY P C.	Heavy Equipment Mechanic	I	6B	\$ 18.59	38,667.20	40,353.68	12,243.48	10,973.83	494.52	173.94	579.46	3,780.14	374.40	64,541.81	
1	HUDSON, WILLIAM M.	Heavy Equipment Mechanic	I	8D	\$ 20.54	42,723.20	44,586.59	12,243.48	10,973.83	494.52	173.94	579.46	3,780.14	223.34	56,188.19	
1	LEON GUERRERO, JOHN J	Heavy Equipment Mechanic	I	6A	\$ 18.41	38,292.80	39,962.96	12,243.48	10,973.83	494.52	173.94	579.46	3,780.14	223.34	56,188.19	
9						360,076.60	374,976.11	\$ 28,152.84	\$ 74,815.60	3,461.64	1,565.46	3,929.98	22,433.06	821.08	510,155.77	
WELDER SECTION (414)																
1	TEDTAO, JOSE M	Welder Supervisor	K	9B	\$ 27.23	56,630.00	59,089.94	16,228.84	13,817.01	494.52	173.94	856.95	1,682.98	-	76,854.19	
1	TAITANO, MICHAEL J	Welder Leader	J	8C	\$ 23.18	48,214.00	50,316.87	13,817.01	11,304.88	494.52	173.94	596.94	6,516.90	374.40	60,630.12	
1	AQUIL, EARL T L	Welder I	I	6D	\$ 18.97	39,448.00	41,168.54	11,304.88	11,304.88	494.52	173.94	597.09	6,516.90	374.40	60,643.04	
1	ARGMIN, RAY D	Welder II	I	6D	\$ 18.97	39,448.00	41,168.54	11,304.88	11,304.88	494.52	173.94	596.94	6,516.90	374.40	60,643.04	
1	DUENAS, DAVID D	Welder II	I	6C	\$ 18.78	39,062.40	40,766.12	11,304.88	11,304.88	494.52	173.94	591.11	1,682.98	-	53,738.82	
1	FEJERAN, PETER JR Q.	Welder II	I	6C	\$ 18.78	39,062.40	40,766.12	11,304.88	11,304.88	494.52	173.94	591.11	1,682.98	-	53,220.07	
1	9409	MENDIOLA, JESSE C.	Welder I	I	6D	\$ 18.97	39,448.00	41,178.56	11,304.88	11,304.88	494.52	597.09	6,516.90	374.40	64,541.81	
1	9402	MENDIOLA, ROY C.	Welder II	I	11D	\$ 23.14	48,134.00	50,233.38	13,794.09	11,417.79	494.52	602.91	3,780.14	223.34	68,204.89	
1	9405	TAITINGFONG, DON P.	Welder II	I	7A	\$ 19.15	39,842.00	41,579.72	11,417.79	11,417.79	494.52	602.91	3,780.14	223.34	68,204.89	
9						389,693.60	406,690.24	\$ 27,611.10	\$ 84,066.04	3,461.64	1,565.46	4,439.03	26,696.80	1,188.08	555,728.38	
FACILITY MAINTENANCE DIVISION																
Building Maintenance Superintendent's Office (420)																
1	RAGASA, JOE A.	Building Maint. Superintendent	N	6C	\$ 36.15	75,201.00	78,480.92	21,550.86	19,222.85	494.52	173.94	1,137.97	-	-	101,343.69	
1						75,201.00	78,480.92	\$ 21,550.86	\$ 19,222.85	-	173.94	1,137.97	-	-	101,343.69	
BUILDING MAINTENANCE SECTION (421)																
1	MUNOZ, RAYMOND C.	Building Maintenance Supervisor	K	8A	\$ 25.80	53,881.00	56,231.04	15,441.04	13,817.01	494.52	173.94	815.35	1,682.98	225.94	75,064.81	
1	TAITANO, DAVID C.	Building Maintenance Leader	I	10B	\$ 21.80	45,344.00	47,321.70	12,994.54	11,532.14	494.52	173.94	686.16	2,400.84	225.94	63,803.12	
1	AGUON, ANTHONY J	Building Maintenance Leader	I	7B	\$ 19.35	40,241.00	41,996.13	10,015.57	9,721.26	494.52	173.94	528.86	2,400.84	374.40	58,786.79	
1	CUNANAN, MARCELINO E	Carpenter II	H	7A	\$ 16.80	34,949.00	36,473.31	9,721.26	9,721.26	494.52	173.94	513.32	2,400.84	225.94	50,312.99	
1	SAN NICOLAS, ANTHONY N.	Carpenter II	H	6A	\$ 16.31	33,922.00	35,401.52	9,721.26	9,721.26	494.52	173.94	513.32	2,400.84	225.94	46,304.56	
1	MARQUEZ, FELICIANO F.	Plumber II	H	7A	\$ 16.80	34,949.00	36,473.31	10,015.57	9,721.26	494.52	173.94	513.32	2,400.84	225.94	49,063.67	
1	MUNOZ, JOAQUIN G.	Plumber II	H	11C	\$ 20.10	41,805.00	43,628.34	11,980.34	10,115.87	494.52	173.94	632.61	1,682.98	225.94	58,324.15	
1	PEREZ, MELCHOR B D.	Plumber II	H	7B	\$ 16.97	35,299.00	36,838.58	11,980.34	10,115.87	494.52	173.94	534.16	1,682.98	225.94	48,157.07	
1	TASS, JOHN E	Plumber II	H	4C	\$ 15.21	31,639.00	32,701.34	8,979.79	8,326.62	494.52	173.94	474.17	3,780.14	223.34	46,332.72	
1	THADOR, LEO D.	Painter II	G	6A	\$ 14.16	29,461.00	30,322.73	8,979.79	8,326.62	494.52	173.94	439.68	3,780.14	223.34	39,757.50	
1	DIAZ, LUIS M	Painter I	E	8B	\$ 11.92	24,793.00	25,874.36	7,105.10	6,965.25	494.52	173.94	375.18	1,682.98	225.94	33,932.01	
1	INCIONG, MAMERTO P.	Painter I	E	8B	\$ 11.92	24,793.00	25,874.36	7,105.10	6,965.25	494.52	173.94	375.18	1,682.98	225.94	33,932.01	
1	8325	GUMATAO, SHAUN R.	Maintenance Worker I	H	7D	\$ 11.69	24,305.00	25,365.07	6,965.25	494.52	173.94	367.79	1,682.98	225.94	35,275.49	
1	8326	GUMATAO, SHAUN R.	Maintenance Worker I	H	7D	\$ 11.69	24,305.00	25,365.07	6,965.25	494.52	173.94	367.79	1,682.98	225.94	35,275.49	
1	8326	GUMATAO, SHAUN R.	Maintenance Worker I	H	3A											
1	8326	GUMATAO, SHAUN R.	Maintenance Worker I	H	3A											
13						467,502.00	487,151.45	\$ 54,548.94	\$ 79,222.85	3,956.16	2,261.22	6,534.83	23,722.14	1,953.38	659,350.98	
JANITORIAL SERVICES SECTION (422)																
1	CRUZ, LORENZO S.	Maintenance Custodian	C	10B	\$ 12.24	25,459.20	26,569.61	7,295.02	7,295.02	494.52	173.94	385.26	2,400.84	374.40	37,320.19	
1	TORRES, SYLVESTER S.	Maintenance Custodian	C	8B	\$ 9.17	19,078.00	19,513.86	5,358.51	5,358.51	494.52	173.94	282.95	3,606.72	374.40	29,804.90	
1	MUSSVAL, MELISSA F.	Maintenance Custodian	C	4C	\$ 7.90	16,832.00	17,312.80	4,627.81	4,627.81	494.52	173.94	244.37	2,400.84	374.40	22,393.55	
1	GUERRERO, JEROME PETER P.	Maintenance Custodian	C	4C	\$ 7.90	16,832.00	17,312.80	4,627.81	4,627.81	494.52	173.94	244.37	2,400.84	374.40	22,393.55	
1	SANTOS, COLBY JOHN L.	Maintenance Custodian	C	4C	\$ 7.90	16,832.00	17,312.80	4,627.81	4,627.81	494.52	173.94	244.37	2,400.84	374.40	22,393.55	
1	8211	COMODA, WYLLIE JOHN D.	Maintenance Custodian	C	4C	\$ 7.90	16,832.00	17,312.80	4,627.81	4,627.81	494.52	243.95	2,400.84	374.40	22,375.22	
1	8212	COMODA, WYLLIE JOHN D.	Maintenance Custodian	C	4C	\$ 7.90	16,832.00	17,312.80	4,627.81	4,627.81	494.52	243.95	2,400.84	374.40	22,375.22	
1	PEREZ, JOSE M	Stevedore	F	10A	\$ 14.42	30,003.00	30,485.93	9,371.44	8,979.79	494.52	173.94	442.05	3,606.72	374.40	43,949.00	
1	4314	CAMACHO, JOSEPH T.	Maintenance Cust Supvr (LTD)			140,268.20	143,936.39	\$ 39,525.48	\$ 39,525.48	3,461.64	1,217.58	2,087.11	9,614.28	748.80	200,595.28	

Position Number	NAME	POSITION TITLE	FY-2011		Annual Income	RET-DB	RET-DC	RET-DDI	LIFE	MEDICARE	MEDICAL	DENTAL	TOTAL
			Hourly Rate	Annual Income									
ELECTRICAL/REFRIGERATION SECTION (423)													
1	8100	CAMACHO, KENNETH N.	I	9A	\$ 26.96	56,076.80	16,070.31						
1	8124	MANIBUSAN JR., ATANACIO C.	J	7C	\$ 22.28	46,333.00	13,277.96		173.94	848.58	6,516.90	374.40	82,506.74
1	8307	CRUZ, RONNIE J.	I	8A	\$ 20.74	43,144.00	12,364.07		173.94	2,400.84	2,400.84	225.94	64,432.51
1	8111	SAN MIGUEL, JOSEPH F.	I	8B	\$ 20.13	41,875.00			173.94	652.87			58,216.62
1	8125	RODRIGUEZ, CHRIS J.	I	5D	\$ 18.23	37,909.00	11,620.28		173.94	613.60	2,400.84		50,230.51
1	8121	SAN NICOLAS, DAVID R.	G	2C	\$ 12.32	25,630.00	7,113.52		173.94	557.48	3,780.14	223.34	38,066.11
1	8126	DIEGO, THOMAS JESSE M.	G	2C	\$ 12.32	25,630.00	7,070.89		173.94	373.37	2,400.84	225.94	36,489.27
1	8114	CALVO, KENNETH L.	I	2A	\$ 15.70	33,263.00	9,134.12		173.94	482.32	2,400.84	225.94	46,175.04
8						309,250.80	\$ 41,712.34	\$ 45,496.35	1,391.52	3,903.84	19,900.40	1,275.56	433,737.08
MAINTENANCE CONTROL SECTION (430)													
1	7102	AFLAGUE, ALEXANDER J.	I	6A	\$ 18.41	38,288.00							
1	7100	OKAZAKI, FRANCISCO C.	I	6A	\$ 18.41	38,288.00	10,972.45		173.94	579.39	2,170.48	223.34	54,572.07
1	7102	OUENGA, SHANNON T.	I	6A	\$ 18.41	38,288.00	10,972.45		173.94	579.39	2,170.48	223.34	52,178.25
1	NEW	NEW	J	3B	\$ 6.00	12,480.00	3,427.01		173.94	579.46	3,780.14	223.34	56,188.19
1	NEW	NEW	J	3B	\$ 6.00	13,024.32	3,427.01		173.94	188.85	1,682.98	225.94	19,217.56
5						139,828.80	\$ 145,927.49	\$ 39,772.75	869.70	2,115.95	9,316.58	898.56	201,373.62
CORPORATE SERVICES (600)													
1	600	LEON, VIVIAN C.	Q	4D	\$ 49.96	103,916.80	29,780.14		173.94		6,516.90	374.40	145,284.55
1	NEW	NEW	E	4B	\$ 10.17	21,144.00	21,246.47		173.94	308.07	1,682.98	225.94	29,966.20
2						125,060.80	\$ 29,780.14	\$ 5,834.28	347.88	308.07	8,199.88	600.34	175,260.75
GENERAL ADMINISTRATION (610)													
1	601	MAFNAS, ANTOINETTE M.	K	6A	\$ 23.92	49,759.00	14,259.77						
1	540	AYUYU, RONALD A.	I	3D	\$ 16.83	35,008.00	16,299.26		173.94	752.97	3,780.14	223.34	71,119.43
1	8203	CANDOLETA, JOSHUA V.	C	4B	\$ 7.82	16,270.00	4,473.15		173.94	509.55	1,682.98	225.94	47,878.03
1	620	PATTERSON, TROY S.	C	4B	\$ 7.82	16,270.00	4,547.39		173.94	236.20	1,682.98	225.94	23,576.45
1	627	JENKINS, ARIEL A.V.	C	4B	\$ 7.82	16,270.00	4,547.39		173.94	240.12	1,682.98	225.94	23,924.93
1	621	MESA, JOEY D.C.	C	4B	\$ 7.82	16,270.00	4,547.39		173.94	240.12	1,682.98	225.94	23,924.93
1	6001	ECLAVEA, EDNA M.	C	4B	\$ 7.82	16,270.00	4,547.39		173.94	240.12	1,682.98	225.94	23,924.93
7						166,117.00	\$ 14,259.77	\$ 32,312.51	1,217.58	2,459.21	13,878.02	1,578.98	238,273.63
HUMAN RESOURCES (620)													
1	800	ROCIO, FRANCINE T.	N	6C	\$ 36.15	75,192.00	21,548.28						
1	807	ARRIOLA, FRANCES T.	L	6B	\$ 27.54	57,283.20	16,416.04		173.94	1,137.84	1,682.98	225.94	103,240.51
1	803	NEDEDOG, CARMELITA C.	J	8C	\$ 23.18	48,214.40	50,317.29		173.94	866.83	1,682.98	225.94	79,147.36
1	104	CEPEDA, SHAWN B.	I	6D	\$ 18.97	39,457.60	11,307.63		173.94	729.60	1,682.98	225.94	67,441.40
1	808	CASTRO, EVANGELINE O.	E	8B	\$ 11.92	24,793.60	7,105.27		173.94	597.09			53,751.74
5						244,940.80	\$ 37,964.32	\$ 32,230.03	869.70	3,706.55	5,048.94	677.82	337,604.90
PROCUREMENT/SUPPLY DIVISION (630) (631)													
1	2000	JAVIER, ALMA B.	N	5D	\$ 35.09	72,990.00	20,570.34						
1	2103	NEDEDOG, EDA LOUISE T.	G	6B	\$ 14.31	29,764.80	31,063.00		173.94	450.41	2,170.48	374.40	97,824.96
1	2104	WUSSITIG, PEARL ANGEL C.	G	6B	\$ 14.59	30,347.20	31,670.80		173.94	450.41	2,170.48	374.40	97,824.96
1	2003	CASTRO, PIA A.	G	4C	\$ 13.34	27,754.00	7,850.77		173.94	414.55	1,682.98	225.94	43,404.21
4						160,856.00	\$ 20,570.34	\$ 25,077.47	695.76	1,324.19	10,370.36	600.34	226,355.85
SUPPLY SECTION (632)													
1	2005	SABLAN, ANNIE L.G.	L	5D	\$ 27.00	56,163.00	15,427.36		173.94	814.93	1,682.98	225.94	75,016.55
1	953	PECINA, GEORGE C.	F	13C	\$ 16.75	34,840.00	9,984.34		173.94	527.21	1,682.98	225.94	48,953.97
1	2200	DUENAS, GILBERT M.	I	6A	\$ 18.41	38,292.80	39,962.96		173.94	579.46	3,006.72	374.40	56,165.83
1	2201	CASTRO JR., PETE S.	E	10B	\$ 12.91	26,852.00	28,024.00		173.94	406.35	3,006.72	374.40	46,715.31
1	2202	DIAZ, MICHAEL B.	E	15A	\$ 15.59	33,849.67	9,285.12		173.94	490.82	2,400.84		40,210.38
1	626	CRUZ, JOSEPH P.	C	17D	\$ 13.39	27,651.20	29,065.94		173.94	421.46	1,682.98		39,820.34
6						216,434.80	\$ 19,279.45	\$ 42,073.08	1,978.08	3,240.23	14,663.22	1,200.68	306,942.38
Contract Management Section ()													

FY-2012
APPROVED STAFFING PATTERN

Position Number	NAME	POSITION TITLE	FY-2011		Annual Income	Annual Income Estimated	RET-DB	RET-DC	RET-DDI	LIFE	MEDICARE	MEDICAL	DENTAL	TOTAL
			Pay Grad	Hourly Rate										
1	CRUZ, LAWRENCE M.	Contract Management Administrator	L	5C	\$ 55,607.00	\$ 55,876.48	\$ -	\$ 15,269.68	494.52	173.94	810.21	1,682.98	225.94	74,533.75
1					\$ 55,607.00	\$ 55,876.48	\$ -	\$ 15,269.68	494.52	173.94	810.21	1,682.98	225.94	74,533.75
ENGINEERING DIVISION (640)														
1	DELOS SANTOS, SIMEON S.	Engineer Manager	O	18C	\$ 92,830.40	96,879.23	26,603.04			173.94	1,404.75	1,682.98	225.94	126,969.88
1	MANGUBAT, RUDEL J.	Engineer III	L	18D	\$ 63,286.00	66,046.24	18,136.30			173.94	957.67	6,516.90	374.40	92,205.45
1	CONDE, ENRIQUE S.	Engineer II	K	18C	\$ 54,965.00	57,362.32	15,751.69			173.94	831.75	2,400.84	-	76,520.55
1	NEW	Engineer Technician II	H	4B										
4					211,081.40	220,287.80	\$ 60,491.03	\$ -	\$ -	521.82	3,194.17	10,600.72	600.34	295,695.88
COMMERCIAL DIVISION (650)														
1	NELSON, GLENN B.	Commercial Manager	N	7D	\$ 79,040.00	82,487.36	22,651.03		494.52	173.94	1,196.07	3,780.14	223.34	111,006.40
1	LEON GUERRERO, JOHN L.	Administrative Assistant	G	6A	\$ 29,461.00	31,334.16	8,134.80		494.52	173.94	429.55	-	-	38,956.97
1	PECINA, MARYLYNE R.P.	Program Coordinator III	K	7B	\$ 52,297.00	54,577.95	14,987.11		494.52	173.94	791.38	2,170.48	223.34	73,418.72
1	BLAZ, PETER E.	Program Coordinator II	J	6A	\$ 43,648.00	45,551.72	12,508.50		494.52	173.94	660.50	-	-	59,389.19
1	CARBULLIDO, RITA B.	Program Coordinator I	J	18A	\$ 43,648.00	45,551.72	12,508.50		494.52	173.94	660.50	-	-	59,389.19
1	SANCHEZ, DORIS D.	Program Coordinator I	J	18A	\$ 43,648.00	45,551.72	12,508.50		494.52	173.94	660.50	-	-	59,389.19
6					291,742.00	303,344.65	\$ -	\$ 83,298.44	2,967.12	1,043.64	3,738.00	11,211.10	670.02	403,182.97
INFORMATION TECHNOLOGY DIVISION (670)														
1	SUK, SOOJIA L.	Systems Manager	N	6C	\$ 75,192.00	78,471.53	21,548.28			173.94	1,682.98	225.94	-	102,102.67
1	JENKINS, CAROL V.	Administrative Assistant	G	13B	\$ 39,312.00	41,026.61	11,265.91			173.94	594.89	3,780.14	223.34	57,064.82
1	PEREZ, DENNIS J.	Systems Programmer	L	7B	\$ 62,212.84	62,212.84	17,083.64		494.52	173.94	902.09	2,400.84	223.34	83,267.87
1	BONTO, ARDEN B.	Systems Programmer	L	6A	\$ 56,721.60	59,195.53	16,255.09		494.52	173.94	868.34	2,170.48	223.34	79,371.24
1	BLAS, DORIS G.	Computer Operator III	J	9C	\$ 44,012.80	45,932.44	12,613.05		494.52	173.94	666.02	1,682.98	-	61,068.42
1	YATAR, ANTHONY J.S.	Computer Operator Specialist	J	4D	\$ 41,530.00	43,341.35	11,901.53		494.52	173.94	628.45	-	-	56,539.79
1	NEW	Computer Help Desk Technician												
1	NEW	Computer Support Specialist												
1	NEW	Programmer Analyst	I	5A										
1	NEW	Technology Specialist												
10					316,381.20	330,180.29	\$ 45,427.23	\$ 45,240.27	1,483.56	1,043.64	3,649.78	11,717.42	672.62	439,414.81
FINANCE DIVISION														
Controller's Office (675)														
1	GUIVARA III, JOSE B.	Financial Affairs Controller	N	7D	\$ 79,828.00	83,309.73	22,878.85		494.52	173.94	1,207.99	2,170.48	223.34	110,456.85
1	MARTIN, EDGAR P.	Administrative Assistant	G	7C	\$ 31,263.20	32,647.63	8,963.04		494.52	173.94	473.38	2,578.68	277.16	45,610.36
1	CRUZ, JACQUELINE A.	Administrative Aide	E	9B	\$ 25,782.00	26,916.93	7,391.39		494.52	173.94	390.30	1,682.98	225.94	37,275.99
1	MUNOZ, PATRICIA T.	General Accounting Supervisor	M	7A	\$ 32,35	33,841.52	19,283.18		494.52	173.94	1,018.23	-	-	91,192.66
1	CONWAY, JOANN B.	Accountant III	L	2C	\$ 49,349.00	51,262.22	14,076.61		494.52	173.94	743.30	-	-	66,750.59
1	QUIJABAO, RICHARD P.		L	2C	\$ 253,540.20	264,359.30	\$ -	\$ 72,593.06	2,472.60	869.70	3,833.21	6,432.14	726.44	351,286.45
5														
BUDGET OFFICE (140)														
1	BAMBA, VINCENT C.	Budget Analyst	J	4D	\$ 41,530.00	42,148.16	11,573.88		494.52	173.94	611.15	2,400.84	225.94	57,628.43
1					41,530.00	42,148.16	\$ -	\$ 11,573.88	494.52	173.94	611.15	2,400.84	225.94	57,628.43
REVENUE ACCOUNTING SECTION (681)														
1	LEON GUERRERO, JENNIFER A.	Tariff Supervisor	I	5A	\$ 36,794.00	37,634.60	10,334.46		494.52	173.94	545.70	1,682.98	225.94	51,092.14
1	MARTIN, EDGAR P.	Accounting I	I	8D	\$ 42,723.20	44,586.59	12,243.48		494.52	173.94	646.51	2,170.48	223.34	60,044.33
1	LEON GUERRERO, CHRISTINA M.	Accounting Technician III	H	5B	\$ 33,692.50	33,692.50	9,251.97		494.52	173.94	488.54	2,170.48	223.34	46,495.33
1	MANGLONA, ANN T.	Accounting Technician II	F	13C	\$ 34,840.00	36,359.56	9,984.34		494.52	173.94	527.21	1,682.98	225.94	49,448.49
1	GUERRERO, MARY ER.	Accounting Technician I	E	6B	\$ 22,896.00	23,220.95	6,376.47		494.52	173.94	336.70	6,516.90	374.40	36,999.36
1	AFLAGUE, PETER G.	Tariff Technician	E	15A	\$ 32,427.20	33,841.52	9,282.88		494.52	173.94	490.70	1,682.98	225.94	45,482.03
1	BERMUIDES, JASON J.	Claims Officer	E	13B	\$ 31,562.27	31,562.27	8,667.00		494.52	173.94	457.65	1,682.98	225.94	43,264.30
1	WESLEY, JOHN B.	Planner Work Coordinator	E	12C	\$ 29,369.60	30,650.57	8,416.65		494.52	173.94	444.43	-	-	40,180.11
1	HOPKINS, ARTHUR D.		I	9B	\$ 37,162.00	38,107.49	10,464.32		494.52	173.94	552.56	3,606.72	374.40	53,773.94
9					299,053.20	309,656.08	\$ 27,912.83	\$ 57,118.73	2,967.12	1,565.46	4,490.01	21,196.50	1,873.30	426,780.04
EXPENSE ACCOUNTING SECTION (685)														
1	ULBENARIO, MIAMI E.	General Accounting Supervisor	M	5D	\$ 64,026.00	66,097.14	18,147.53		494.52	173.94	958.26	2,170.48	223.34	88,255.22
1	GARCIA, MARYJANE T.	Accountant II	J	7A	\$ 45,420.00	46,567.73	12,787.50		494.52	173.94	675.23	-	-	60,638.92

FY-2012
APPROVED STAFFING PATTERN

Position Number	NAME	POSITION TITLE	FY-2011		FY-2012		RET-DB	RET-DC	RET-DDI	LIFE	MEDICARE	MEDICAL	DENTAL	TOTAL
			Pay Grad	Hourly Rate	Annual Income	Annual Income Estimated								
1	PAYUMC, VIRGINIA C.	Accounting Technician II	F 10D	\$ 15.01	31,220.80	32,582.51	0.27	8,947.10	19.02	173.94	477.45			
1	NEW	Payroll Supervisor	J 5B	\$ 3.00	6,240.00	6,240.00	0.27	1,713.50	494.52	173.94	90.48	1,682.98	225.94	10,621.36
1	NEW	Accountant II	J 4C	\$ 19.77	41,118.00	41,118.00	0.27	11,291.00	494.52	173.94	596.21	1,682.98	225.94	55,582.59
1	NEW	Accounting Technician I	E 4A	\$ 2.50	5,200.00	5,401.60	0.27	1,427.92	494.52	173.94	78.32	1,682.98	225.94	9,485.22
5					234,342.80	239,114.98	\$	\$ 65,605.61	3,461.64	1,217.58	3,467.17	8,902.40	1,127.10	322,896.48
399	Total Positions:				14,909,769	15,472,032	1,370,598	2,916,872	137,938	65,325	199,453	848,768	62,359	21,033,884.76

**FY-2012
APPROVED BUDGET
CAPITAL IMPROVEMENT PROJECTS**

A.) The following are list of projects that are currently ongoing, in the planning and design stage and future construction projects. Please note they are not in any order of priority

Description	Status	Funding Source	Proposed Amount
Gregorio D. Perez Marina Renovation & Site Improvements - Phase I	Ongoing	Federal	408,333
Mobil Pipeline Repairs (FHWA waiting for design before issuance of NTP)*	Ongoing	Federal	1,458,333
TO4 - Prepare Permit Applications	Ongoing	Federal	59,709
TO7-2 - Consultations on PMC Solicitation	Ongoing	Federal	48,965
TO12-Port Capacity Building	Ongoing	Federal	391,831
TO23-2 On-Call Topographic Survey	Ongoing	Federal	54,289
TO27 Environmental Studies	Ongoing	Federal	57,965
TO29-4 Marine Design 30%	Ongoing	Federal	3,765
TO29-5 TOS, GOS, & Satellite IT Procurement Planning	Ongoing	Federal	119,926
TO29-7 Security Integration	Ongoing	Federal	148,855
TO31 Replace/Upgrade Port's Crane System	Ongoing	Federal	126,864
TO33 ESA Phase II	Ongoing	Federal	422,892
Follow on Task Orders 4, 7-1, 8-2, 9, 10	Ongoing	Federal	9,163
Organizational Structure and Procedures Manual, to fund TO 32 & 28	Ongoing	Federal	143,193
Container Yard Lights	Ongoing	Federal	834,016
Emergency Response Vehicle for Port Police	Ongoing	Federal	50,000
Renovation/Upgrade of Existing Port Police Building to Serve as Port's Maritime & Port	Ongoing	Federal	521,000
Repair Dock A, Dock B, Pilings, Waterblasting -GDP Marina	Ongoing	Federal	240,000
Analysis & Development of Management Regime for Small Boat Marina	Ongoing	Federal	10,000
Enterprise Network Infrastructure & Control Center Upgrade	Ongoing	Federal	1,316,875
Total On-Going Federal Projects:			6,425,974
Gregorio D. Perez Marina Actual Renovation & Site Improvements - Phase I	Plan	Federal	293,333
Gregorio D. Perez Marina Actual Renovation & Site Improvements - Phase II	Plan	Federal	1,250,000
Agat Marina A-Dock Repair & Replacement	Plan	Federal	175,000
OEA Project Management Listing (May 2011-Dec.2012)	Plan	Federal	1,050,000
TOTAL PLAN:			2,768,333
TOTAL FEDERAL:			9,194,308
F1 Catwalk	Ongoing	PAG	370,000
Mobil Pipeline Construction*	Ongoing	PAG	999,999
Mobil Pipeline Design	Ongoing	PAG	300,001
GDP Marina Waterline Upgrade	Ongoing	PAG	75,000
TO28-9 Project Management	Ongoing	PAG	340,770
TO29-4 Marine Design 70%	Ongoing	PAG	417,390
TO23-3 Wetland Delineation	Ongoing	PAG	13,799
Container Yard Storm Drain Channel Repairs	Ongoing	PAG	400,000
Electrical upgrades on buildings secondary sub-panel board	Ongoing	PAG	75,000
Total On-Going PAG Projects:			2,991,959
Warehouse 1, Concrete Roof Joint Seal Repair	Plan 1	PAG	75,000
Warehouse 1, Bay 3, cmu Wall Removal	Plan 1	PAG	65,000
Warehouse 1, Bay 2 & 3, Internal cmu Wall Removal	Plan 1	PAG	50,000
Warehouse 1, Bay 2 Concrete Column Repair	Plan 1	PAG	70,000
Container Yard Pavement Repairs	Plan 1	PAG	50,000
Spall Repairs in Admin, Horizon, CFS, EQMR, Whse 1, & Port Police	Plan 1	PAG	250,000
Maintenance Reserve	Plan 1	PAG	300,000
VHF Radio Counsel and Back Ups/Accessories	Plan 1	PAG	125,000
TOTAL PLAN:			985,000
TOTAL PAG:			3,976,959

**FY-2012
APPROVED BUDGET
CAPITAL IMPROVEMENT PROJECTS**

Top Lifters-2	Plan	Loan	1,300,000
Container Gate System	Plan	Loan	1,200,000
Terminal operating System	Plan	Loan	1,960,000
OAE Project Management System Upgrade	Plan	Loan	1,200,000
Financial Management System	Plan	Loan	900,000
TOTAL LOAN:			6,560,000
GRAND TOTAL PAG/FEDERAL/LOAN:			19,731,266
Gantry 3 CIP's (MATSON)			
1. Trolley Rail Replacement/Repairs: rails, rail beds, splice plates, etc.	Plan	PAG	175,000
2. Trolley Truck/FFrame Repairs	Plan	PAG	50,000
3. Trolley Tensioner Hydraulic Package Replacement	Plan	PAG	50,000
4. Upper Machinery House Roof Repairs	Plan	PAG	25,000
5. Gantry Truck/Pin Sleeves Replacement	Plan	PAG	25,000
6. Annual Main Engine/Drives Tuneup	Plan	PAG	50,000
7. Drive Motors Overhaul	Plan	PAG	80,000
8. Spare Main Generator Alternator	Plan	PAG	80,000
9. Gantry Wheel Brakes Upgrade	Plan	PAG	110,000
10. Structural Bolts Replacement	Plan	PAG	60,000
11. Main Generator Alternator Overhaul	Plan	PAG	60,000
12. Corrosion Control Structural	Plan	PAG	90,000
13. Electrical Upgrades	Plan	PAG	95,000
14. Engineering Services	Plan	PAG	50,000
TOTAL: \$1,000,000.00, this does not include regular pm and vessel support.			
TOTAL			1,000,000

UNFUNDED PAG (CIP's)			
Emergency Generator & Power Conditioner for IT Office	Plan 2	Unfunded	100,000
Telephone Upgrade and Maintenance Services	Plan 2	Unfunded	200,000
Manlift	Plan 2	Unfunded	150,000
Utility Service Truck	Plan 2	Unfunded	50,000
Utility Service Truck	Plan 2	Unfunded	50,000
4x2 Pick-Up Truck (Automayic Transmission) Extra Cab	Plan 2	Unfunded	26,000
Surveillance Cameras for CCTV, DVR ,UPS ,etc.	Plan 2	Unfunded	30,000
2,000 Gal. Cap Service Truck	Plan 2	Unfunded	165,000
Replacement of Corroded Chain Link Fence & Barbwires (1,700LF).*	Plan 2	Unfunded	100,000
Wharf F-5 Annual Cathodic Protection Survey	Plan 2	Unfunded	15,000
Relocation of Fiber Patch Panels	Plan 2	Unfunded	15,000
Louver Ventilation Openning at Facility Maintenance Shop	Plan 2	Unfunded	12,000
Provide Wall Partitonn in Assistant Harbor Master's Office	Plan 2	Unfunded	5,000
Fire Sprinkler System As-Built & Certification	Plan 2	Unfunded	30,000
Relocation of Temp office into CFS Building	Plan 2	Unfunded	6,700
American Disability Act	Plan 2	Unfunded	10,000
F1 Pier Repairs	Plan 2	Unfunded	150,000
Roll-up Door Repairs for LC-1, LC-2 & LC-4 Bldg	Plan 2	Unfunded	40,000
Water Line Repairs @ Port Areas	Plan 2	Unfunded	70,000
Signal Conduit Repair	Plan 2	Unfunded	20,000
Automatic Transfer System for LC-2 Building	Plan 2	Unfunded	100,000
Replacement of Admin's Stuck-up Windows	Plan 3	Unfunded	110,000
Port Police Security Upgrades	Plan 3	Unfunded	200,000
Exhaust Fan Replacement for LC-1, LC-2, & LC-4	Plan 3	Unfunded	25,000
Dedicated Generator	Plan 3	Unfunded	35,000
Wind Speed and Direction Indicator	Plan 3	Unfunded	8,000
Design - CM Services, DGP Marina Renovation & Site Improvement, Phase 1		Unfunded	233,900
Design - CM Services, DGP Marina Renovation & Site Improvement, Phase 2		Unfunded	197,061
Design - A/E Cathodic Protection for Wharf F3, F4, & F6		Unfunded	50,000

**FY-2012
APPROVED BUDGET
CAPITAL IMPROVEMENT PROJECTS**

Design - A/E Mobil Pile Lines Repairs		Unfunded	545,000
Design - A/E Agat Marina Loading Dock		Unfunded	550,000
OneWorld Upgrade		Unfunded	1,200,000
Project Management system, implementation		Unfunded	25,000
Contract Management system, implementation		Unfunded	25,000
Document management system, implement, training		Unfunded	25,000
- Document managing server		Unfunded	8,500
- Document managing scanner		Unfunded	5,000
Line Conditioner - Power		Unfunded	10,000
Fire Supresion Sysytem in server room		Unfunded	15,000
IT room remodeling		Unfunded	30,000
Enterprise Network Infrastructure		Unfunded	750,000
20ft. Container		Unfunded	5,000
Safety			
Safety Office Renovation		Unfunded	8,000
Construction of 3each Designated Smoking areas(shacks)		Unfunded	12,000
EQMR			
Central Tool Room		Unfunded	40,000
Renovation of Shop Office, Break room, Parts room, Working Area in WHSE 1		Unfunded	20,000
Paint Booth		Unfunded	100,000
Renovate Fleet Mechanic's Supervisor Office		Unfunded	5,000
Renovate Fleet Mechanic's Break/Lunch Room		Unfunded	5,000
Security Fence-Drum Lot, EQT Wash Area		Unfunded	2,500
Drum Lot/EQT Wash Area		Unfunded	10,000
Welding Shop:			
Front Opening Need to Install Roll Up Doors		Unfunded	40,000
Facility Maintenance			
PERIMETER FENCE: REPLACEMENT OF CHAIN LINK FENCE TO INCLUDE TOP		Unfunded	100,000
ALL WAREHOUSES: REPAIR ALL CONCRETE SPALL ON EAVE/OVERHANG.		Unfunded	60,000
FACILITY MAINTENANCE SHOP: OPENING OF EXISTING CONCRETE WALL TO		Unfunded	12,000
ADMIN. BLDG.: REPLACEMENT OF EXISTING WINDOWS, 180 EA. 24"X 48" AWNING TYPE.		Unfunded	110,000
LC2 350KW GENSET 480V/3D		Unfunded	85,000
LC3 350KW GENSET 480V/3D		Unfunded	85,000
LC4 850KW GENSET 240V DELTA		Unfunded	100,000
LC2 AUTOMATIC TRANSFER SWITCH CONVERTER		Unfunded	50,000
LC3 AUTOMATIC TRANSFER SWITCH CONVERTER		Unfunded	50,000
LC4 240V/DC TO TRANSFER SWITCH CONVERTER		Unfunded	50,000
HIGH VOLTAGE METERING CABINET REPLACEMENT		Unfunded	15,000
Construction, renovation and other major capital improvement projects for Port and its tenants and users.		Unfunded	75,000
TOTAL			6,431,661

* Mobil pipeline project will be partially funded by FHWA totaling to \$2.4M

Plan

- 1 = Critical
- 2 = Average
- 3 = Future

**FY-2012
APPROVED BUDGET
UNFUNDED EQUIPMENT**

Bus Unit	Section	Description	Amount
Communication Equipment by Description			
610	General Administration	Records Management Software Program	100,000
TOTAL COMMUNICATION EQUIPMENT			100,000
Computer Equipment by Description			
122	Port Police	Toughbook Lap Top 3ea. \$4000.00	12,000
122	Port Police	Nikon D80-Nikon AF-S 18-135MM Lens	3,000
122	Port Police	X-Ray Machine	5,000
300	Operations Manager	Laptop 2007 Series with Docking Station	3,000
310	Stevedore Superintendant Office	Computer System 3ea. \$1115.00	3,345
600	Corporate Service	Notebook Computer	3,000
650	Commercial	Computer System 6ea. \$1500.00	9,000
670	Information Technology	Document Managing Server	8,500
670	Information Technology	Document Managing Scanner	5,000
670	Information Technology	Active Directory Server	35,000
670	Information Technology	DHCP Server	35,000
670	Information Technology	SQL Server 3ea. \$170000.00	510,000
TOTAL COMPUTER EQUIPMENT			631,845
Office Equipment by Description			
300	Operations Manager	AC 3600 BTU 2ea. \$2500.00	5,000
310	Stevedore Superintendant Office	Office Chairs 6ea. \$200.00	1,200
312	Cargo Handling	Lockers with Key Access 13ea. \$600.000	7,800
411	Crane Maintenance Section	Lockers for Crane Mechanic's Personnel	3,000
430	Maintenance Control	AC 12500 BTU plus Installation 2ea. \$1500.00	3,000
610	General Administration	AC 48000 BTU	4,000
630	Procurement & Supply	Office Furniture and Fixtures 2ea. \$2500.00	5,000
640	Engineering/CIP	AC 9000 BTU	800
640	Engineering/CIP	AC 1800 BTU 2ea. \$1000.00	2,000
640	Engineering/CIP	AC 9000 BTU	1,500
TOTAL OFFICE EQUIPMENT			33,300
Other Equipment by Description			
422	Janitorial Services	Riding Mower	8,000
423	Electrical/Refrigeration	Articulating Spider Lift	50,000
423	Electrical/Refrigeration	Mini Backhoe w/Front loader & Rear Digger	30,000
TOTAL OTHER EQUIPMENT			88,000
Power Tools by Description			
TOTAL POWER TOOLS			0
Shop Equipment by Description			
412	Preventive Maintenance	Portable Compressor 375 CFM	35,000
413	Fleet Maintenance	Shop Air Compressor	10,000
413	Fleet Maintenance	Portable Gas Powered Air Compressor	5,000
413	Fleet Maintenance	Tire Machine	8,500
414	Welders	Plasma Cutting Machine	5,000
414	Welders	DU-OPS Portable Welding Machine with Trailer	50,000
422	Janitorial Services	Commercial Buffer	4,500
TOTAL SHOP EQUIPMENT			118,000
Vehicle & Motor Equipment by Description			
121	Harbor Master Division	4x4 Truck	40,000
413	Fleet Maintenance	4 Post Electric Equipment/Vehicle lift	20,000
640	Engineering/CIP	New Engineering Service Vehicle, (4 Door Sedan)	18,000
TOTAL VEHICLE & MOTOR EQUIPMENT			78,000
GRAND TOTAL EQUIPMENT			1,049,145

**PORT AUTHORITY OF GUAM
5 YEARS REVENUE/EXPENSE FORECAST
FY 2012 to FY 2016**

	FY 12	FY 13	FY 14	FY 15	FY 16
OPERATING REVENUES					

CARGO THROUGHPUT REVENUES					

CT-CHASSIS	5,097,831	5,097,831	5,097,831	5,097,831	5,097,831
CT-GROUND	9,835,183	9,835,183	9,835,183	9,835,183	9,835,183
CT-REEFER	1,772,367	1,772,367	1,772,367	1,772,367	1,772,367
CT-REHANDLED	4,696	4,696	4,696	4,696	4,696
CT-BREAKBULK	998,327	998,327	998,327	998,327	998,327
CT-UNITIZED	11,839	11,839	11,839	11,839	11,839
CT-TUNA	-	-	-	-	-
CT-RO/RO	191,236	191,236	191,236	191,236	191,236
CT-STUFFING/DEVAN	71,585	71,585	71,585	71,585	71,585
CT-HEAVYLIFT	44,383	44,383	44,383	44,383	44,383
CT-LONGLENGTH	5,961	5,961	5,961	5,961	5,961
CARGO THROUGHPUT REVENUES	18,033,407	18,033,407	18,033,407	18,033,407	18,033,407
OTHER CARGO RELATED REVENUES	20%				

LIFT ON/LIFT OFF	942	966	990	1,015	1,040
PRESLUNG	173,571	177,042	180,583	184,195	187,879
EXPORT SCRAP CONTAINER					
TRANSSHIPMENT CONTAINERS	2,864,328	2,921,615	2,980,047	3,039,648	3,100,441
OVERSTOWED CONTAINERS	184,586	188,278	192,044	195,885	199,802
SHIFTED CONTAINERS	3,081	3,143	3,206	3,270	3,335
RIGGED CONTAINERS	33,406	34,074	34,756	35,451	36,160
DIRECT LABOR BILLED	1,614,416	1,646,705	1,679,639	1,713,232	1,747,496
EQUIPMENT RENTAL	146,323	149,249	152,234	155,279	158,385
PORT FEES & DOCKAGE	382,152	389,795	397,591	405,542	413,653
WHARFAGE	4,164,614	4,247,906	4,332,864	4,419,521	4,507,912
FUEL SURCHARGE	604,216	616,300	628,626	641,199	654,023
MARITIME SECURITY FEE	165,380	168,688	172,062	175,503	179,013
FACILITY MAINTENANCE FEE	1,424,721	1,453,216	1,482,280	1,511,926	1,542,164
OTHER CARGO RELATED REVENUES	11,761,737	11,996,977	12,236,921	12,481,664	12,731,303
CARGO REVENUES	29,795,144	30,030,384	30,270,328	30,515,071	30,764,710

**PORT AUTHORITY OF GUAM
5 YEARS REVENUE/EXPENSE FORECAST
FY 2012 to FY 2016**

	FY 12	FY 13	FY 14	FY 15	FY 16
<u>NON CARGO REVENUES</u>					
<u>FACILITIES</u>					
FACILITY USAGE-MOBIL	1,078,739	1,100,314	1,122,320	1,144,766	1,167,662
FACILITY USAGE-TRI STAR	2,015,063	2,055,364	2,096,472	2,138,401	2,181,169
SPACE RENTAL	1,666,355	1,699,683	1,733,676	1,768,350	1,803,717
LEASE INCOME-GEDA	839,318	856,104	873,226	890,691	908,504
LICENSE FEE-MATSON/HORIZON	282,679	288,333	294,100	299,982	305,981
COMMON AREA MAINT.FEES	96,326	98,253	100,218	102,222	104,267
SECURITYSURCHARGE	60,067	61,268	62,494	63,743	65,018
GREGORIO D.PEREZ MARINA	52,882	53,940	55,019	56,119	57,241
AGAT MARINA	200,249	204,254	208,340	212,506	216,756
HARBOR OF REFUGE	51,935	52,974	54,034	55,114	56,217
DEMURRAGE FEES	1,073,775	1,095,250	1,117,155	1,139,498	1,162,288
FACILITIES TOTAL	7,417,390	7,565,737	7,717,052	7,871,393	8,028,821
<u>OTHER FEES & SERVICES</u>					
CLAIMS FEE	-	-	-	-	-
BULK SCRAP	286	286	286	286	286
MATERIAL USED	68,678	68,678	68,678	68,678	68,678
PASSENGER SERVICE	67,986	67,986	67,986	67,986	67,986
BUNKER	129,976	129,976	129,976	129,976	129,976
SPECIAL SERVICES	204,843	204,843	204,843	204,843	204,843
ELEC.POWER-UNMETERED	471,769	471,769	471,769	471,769	471,769
OTHER FEES & SERVICES	3,367	3,367	3,367	3,367	3,367
ADMINISTRATIVE FEES & SERVICES	-	0	0	0	0
OTHER REIMBURSEMENTS	7,892,526	8,040,873	8,192,188	8,346,529	8,503,957
NON CARGO REVENUES	11%				
TOTAL REVENUES	37,687,670	38,071,257	38,462,516	38,861,601	39,268,667

**PORT AUTHORITY OF GUAM
5 YEARS REVENUE/EXPENSE FORECAST
FY 2012 to FY 2016**

	FY 12	FY 13	FY 14	FY 15	FY 16
DIVISIONAL AND GENERAL EXPENSE					
<u>Divisional Expense</u>					
Regular Salaries	15,689,527	16,238,660	16,807,014	17,395,259	18,004,093
Overtime	435,500	450,743	466,518	482,847	499,746
Night Differential/Hazard Pay	568,830	588,739	609,345	630,672	652,745
Retirement (25.20%)	4,247,470	4,396,132	4,549,996	4,709,246	4,874,070
Death & Disability	137,939	142,767	147,764	152,935	158,288
Hospital	848,768	878,475	909,222	941,045	973,981
Life	65,923	68,231	70,619	73,090	75,648
Dental	62,399	64,583	66,843	69,183	71,604
Medicare	199,453	206,434	213,659	221,137	228,877
SUB-TOTAL	22,255,809	23,034,763	23,840,979	24,675,414	25,539,053
Other Divisional Expense					
Office Supplies	53,743	55,624	57,571	59,586	61,671
Operational Supplies	1,016,430	1,052,005	1,088,826	1,126,935	1,166,377
Gas, Oil, Diesel	477,000	493,695	510,974	528,858	547,368
Equipment	251,767	260,579	269,699	279,139	288,908
Contractual	758,358	784,901	812,372	840,805	870,233
Miscellaneous	63,775	66,007	68,317	70,708	73,183
Training	75,000	77,625	80,342	83,154	86,064
Travel	110,000	113,850	117,835	121,959	126,228
SUB-TOTAL	2,806,073	2,904,286	3,005,936	3,111,144	3,220,034
TOTAL DIVISIONAL EXPENSE	25,061,883	25,939,049	26,846,915	27,786,557	28,759,087

**PORT AUTHORITY OF GUAM
5 YEARS REVENUE/EXPENSE FORECAST
FY 2012 to FY 2016**

	FY 12	FY 13	FY 14	FY 15	FY 16
<u>General Expense</u>					
Contractual	4,408,371	4,562,664	4,722,357	4,887,639	5,058,707
Communication	119,100	123,269	127,583	132,048	136,670
Miscellaneous	180,000	186,300	192,821	199,569	206,554
Others	2,412,000	2,496,420	2,583,795	2,674,228	2,767,825
Depreciation	2,905,802	3,007,505	3,112,768	3,221,715	3,334,475
SUBTOTAL GENERAL EXPENSE	10,025,273	10,376,157	10,739,323	11,115,199	11,504,231
GRAND TOTAL EXPENSE	35,087,156	36,315,206	37,586,238	38,901,757	40,263,318
(Loss) Earning from Operations	2,600,514	1,756,051	876,278	-40,156	-994,651
<u>OTHER INCOME/EXPENSE</u>					
Non-Operating Expense (Retiree Supplemental In Lieu of Taxes)	(3,256,385)	(3,386,640)	(3,522,106)	(3,662,990)	(3,662,990)
Interest Expense-\$3.5 mil USDA GL	0	(700,000)	(700,000)	(700,000)	(700,000)
Interest Expense-\$25 mil USDA DL	-	(194,322)	(183,755)	(172,511)	(172,511)
Interest Expense-\$25 mil USDA GL-ANZ					
Federal Reimbursements	12,595,878	6,000,000	6,000,000	6,000,000	1,500,000
Insurance Reimbursements					
Miscellaneous Income	137,449	142,947	148,665	154,611	500,004
TOTAL OTHER INCOME/EXPENSE	9,476,942	1,861,984	1,742,804	1,619,111	(2,535,497)
NET INCOME/LOSS	12,077,456	3,618,035	2,619,082	1,578,955	(3,530,148)
ADD/MINUS: NON-CASH EXPENSE (REVENUES)	50,420,997	44,214,204	44,611,181	45,016,212	41,268,671
Depreciation & Amortization	2,905,802	3,007,505	3,112,768	3,221,715	3,334,475
Unfunded Retirement					
Insurance Reimbursements					
TOTAL	2,905,802	3,007,505	3,112,768	3,221,715	3,334,475
Balance without Non Cash Expenses	14,983,258	6,625,540	5,731,850	4,800,669	(195,674)

**Port Authority of Guam
Cash Flow Forecast
FY 2012 - FY 2016**

	2012	2013	2014	2015	2016
Beginning Cash & Investments	\$ 9,000,000	5,458,215	1,241,659	(3,879,156)	(9,942,396)
Sources of Funds					
Operating Revenues	37,687,670	38,071,257	38,462,516	38,861,601	39,268,667
Operating Expense	32,181,354	33,307,701	34,473,470	35,680,042	36,928,843
Funds Provided by Operations	5,506,316	4,763,556	3,989,046	3,181,559	2,339,824
Other Income & Expense					
Non Operating Expense	(3,256,385)	(3,386,640)	(3,522,106)	(3,662,990)	(3,662,990)
Interest Expense-\$3.5 mil USDA GL	-	(194,322)	(183,755)	(172,511)	(172,511)
Interest Expense-\$25 mil USDA DL	-	-	-	-	-
Interest Expense-\$25 mil USDA GL-ANZ	-	-	-	-	-
Miscellaneous Income	137,449	142,947	148,665	154,611	500,004
Federal & Insurance Reimbursement	12,595,878	6,000,000	6,000,000	6,000,000	2,000,000
Gantry Crane CRC (\$85 per container)	-	-	-	-	-
Sources of Funds	9,476,942	2,561,984	2,442,804	2,319,111	(1,335,497)
Uses of Funds					
Debt Service Payment-other equipments-\$3.5 mil	155,177	165,109	175,677	186,921	186,921
Debt Service Payment-\$14 mil GL Gantry Cranes (15 years life)	1,285,189	1,285,189	1,285,189	1,285,189	1,285,189
Debt Service Payment-\$1 mil GL 2 Toplifters (15 years life)	91,800	91,800	91,800	91,800	91,800
Debt Service Payment-\$25 mil GL Gantry 3 Projects	1,000,000	1,000,000	1,000,000	1,000,000	1,000,000
Capital Spending Planned Projects	3,397,000	3,000,000	3,000,000	3,000,000	3,000,000
Capital Spending Projects-Federal	12,595,878	6,000,000	6,000,000	6,000,000	1,500,000
Uses of Funds	18,525,043	11,542,097	11,552,665	11,563,909	7,063,909
Ending Cash & Investments Before Reserves	5,458,215	1,241,659	(3,879,156)	(9,942,396)	(16,001,978)